

Level 17

2500-6000MHz Frequency Mixer

Features

- LO/RF: 2500-6000MHz
- IF: DC-1500MHz
- LO Level: +17dBm
- Conversion Loss: 8.7dB
- RF Input: Up to +14dBm
- IP3: +25dBm
- SMA Connector

Picture



Description

MXR-60H is a passive double balanced mixer operates with LO drive level range of +14dBm to +20dBm.

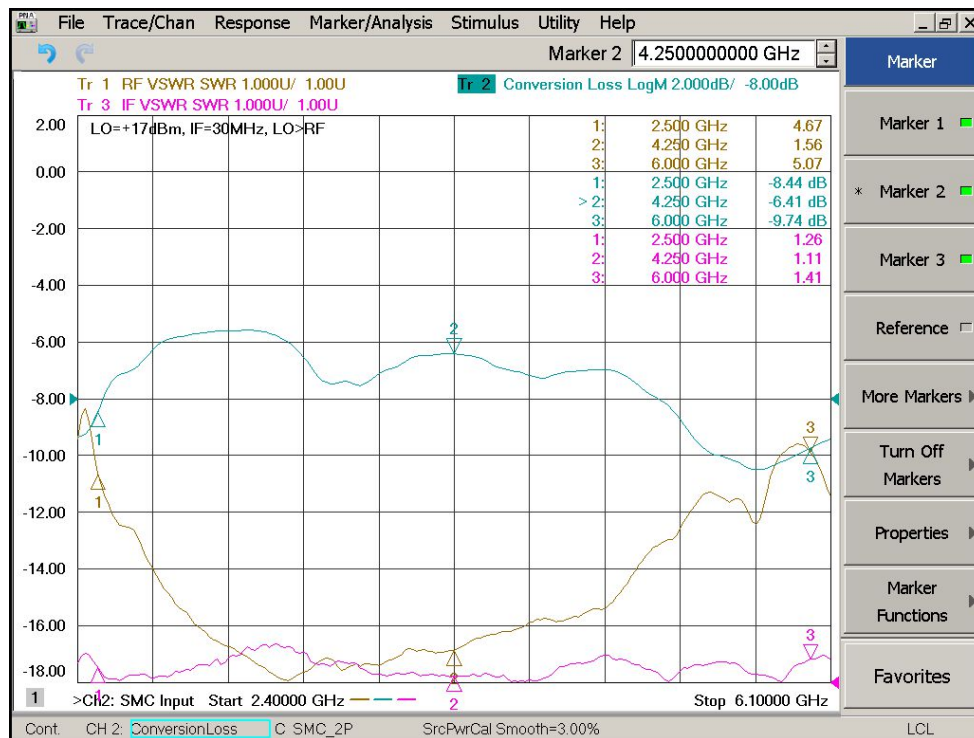
Electrical Specifications @ +25 °C, LO= +17dBm, IF=30MHz, 50Ω

Parameter	Unit	Minimum	Typical	Maximum
Frequency Range				
LO/RF	MHz	2500		6000
IF	MHz	DC		1500
Conversion Loss	dB		8.7	10.7
LO-RF Isolation				
2500-6000 MHz	dB	17	28	
LO-IF Isolation				
2500-6000MHz	dB	8	14	
RF VSWR			5.0:1	6.0:1
IF VSWR			1.5:1	2.0:1
RF Input Power up to	dBm	+12	+14	
IP3 (Center Band)	dBm	+23	+25	

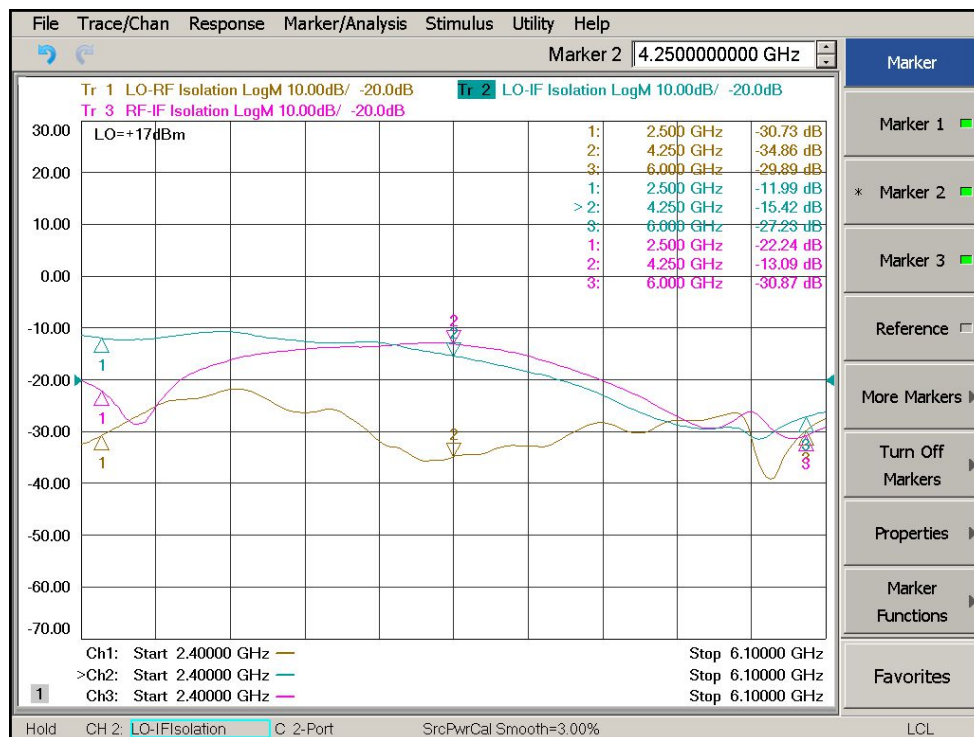
Level 17

2500-6000MHz Frequency Mixer

Conversion Loss, RF/IF VSWR, LO=+17dBm, IF=30MHz



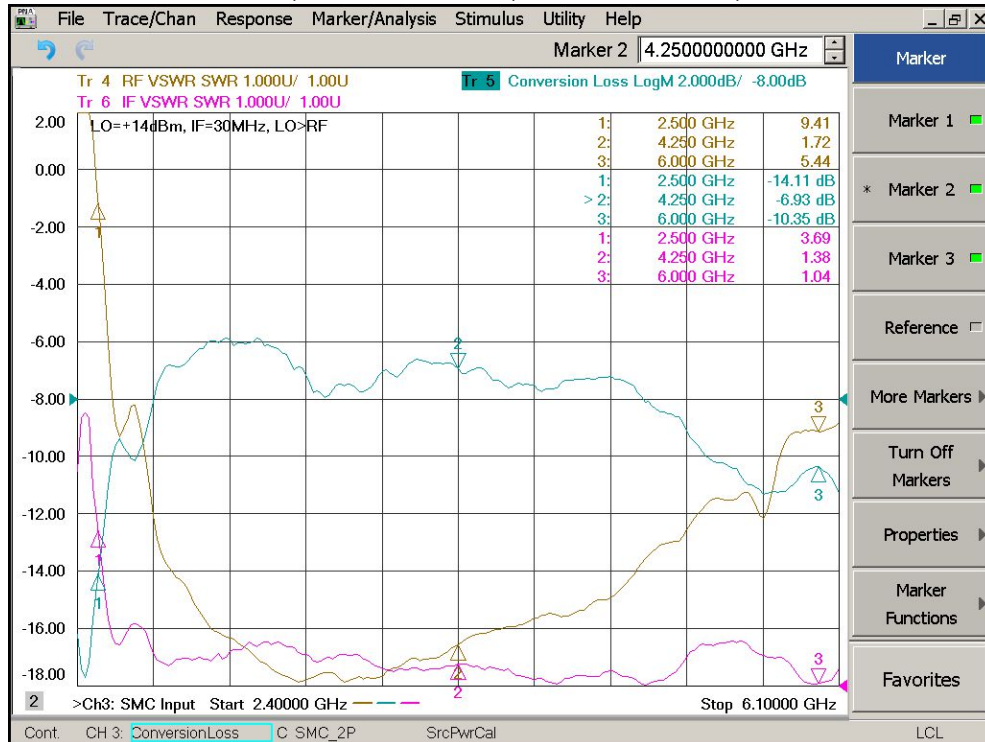
Isolation LO-RF, LO-IF, RF-IF, LO=+17dBm



Level 17

2500-6000MHz Frequency Mixer

Conversion Loss, RF/IF VSWR, LO=+14dBm, IF=30MHz



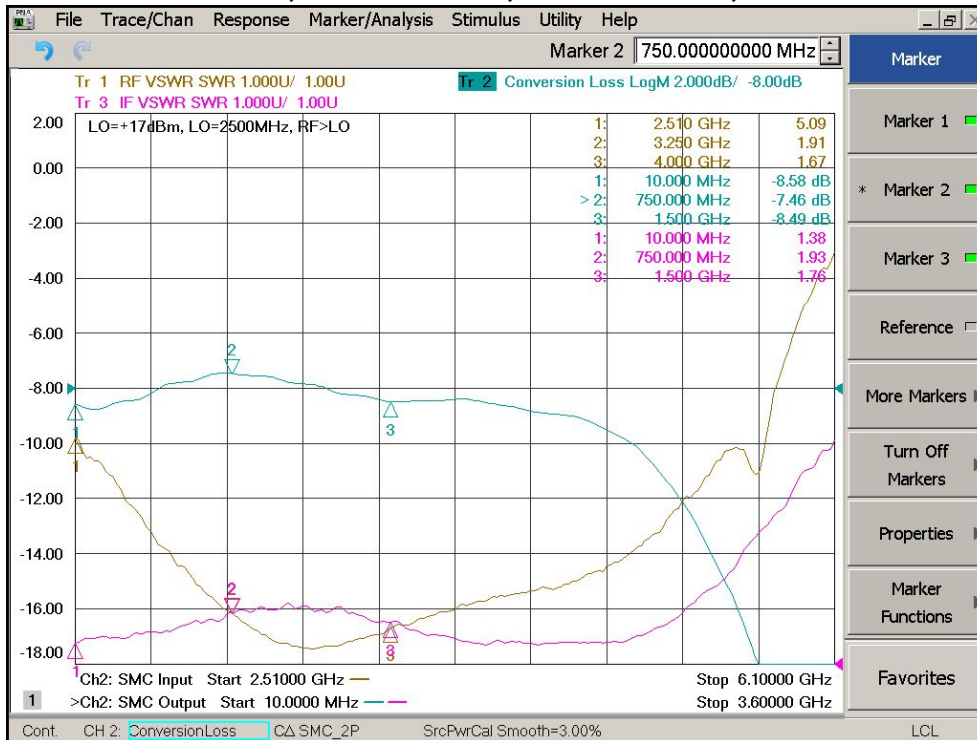
Conversion Loss, RF/IF VSWR, LO=+20dBm, IF=30MHz



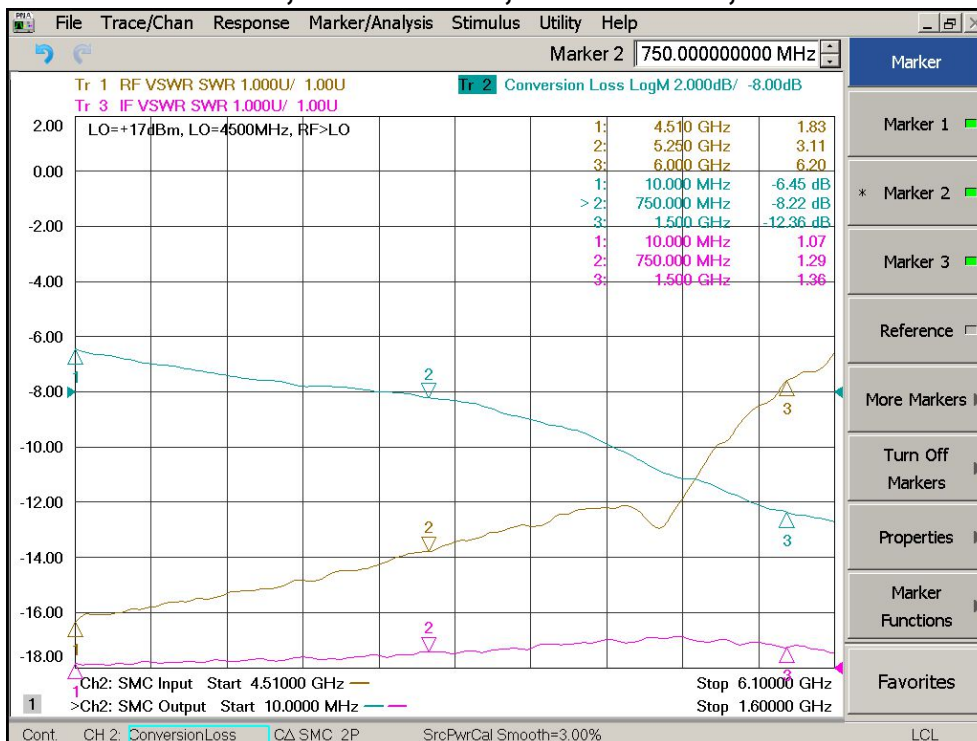
Level 17

2500-6000MHz Frequency Mixer

Conversion Loss, RF/IF VSWR, LO=+17dBm, LO=2500MHz



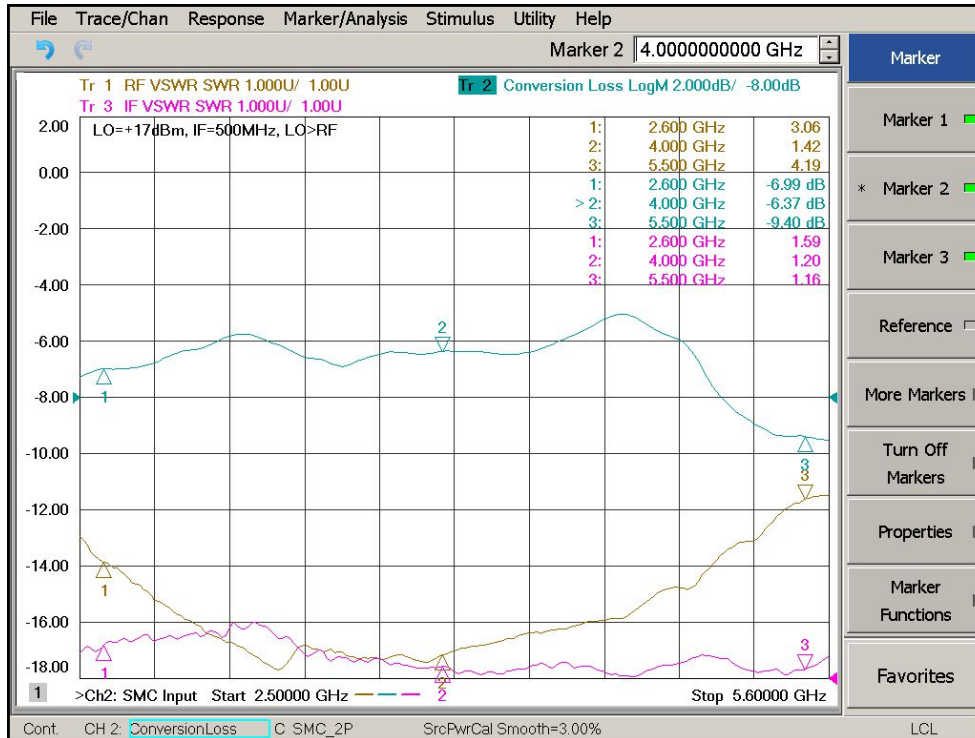
Conversion Loss, RF/IF VSWR, LO=+13dBm, LO=4500MHz



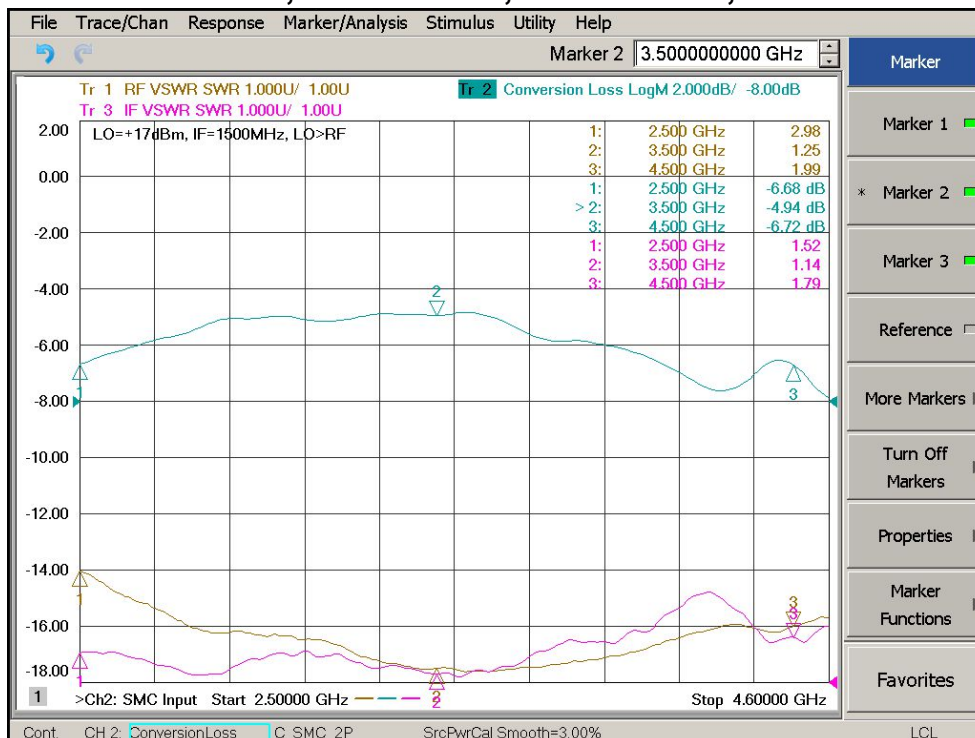
Level 17

2500-6000MHz Frequency Mixer

Conversion Loss, RF/IF VSWR, LO=+17dBm, IF=500MHz



Conversion Loss, RF/IF VSWR, LO=+17dBm, IF=1500MHz



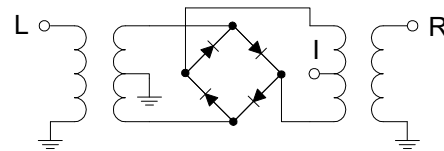
Level 17

2500-6000MHz Frequency Mixer

Absolute Maximum Ratings

Parameter	Absolute Maximum
RF/LO Power	+23dBm
Peak IF Current	40mA
Operating Temperature	-40 °C to +85 °C
Storage Temperature	-55 °C to +100 °C

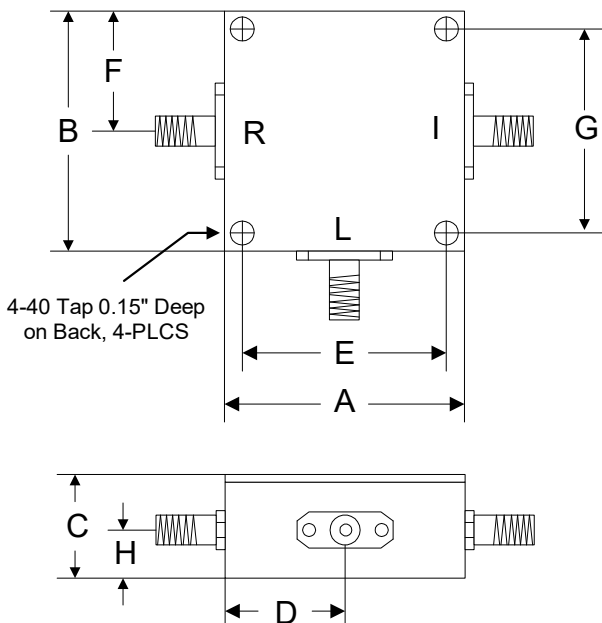
Schematic



ESD Sensitive Material



Outline



	A	B	C	D	E	F	G	H
Inch	1.250	1.250	0.563	0.625	1.000	0.625	1.000	0.250
mm	31.75	31.75	14.29	15.88	25.40	15.88	25.40	6.35