

Level 13

1500-4500MHz Frequency Mixer

Features

- LO/RF: 1500-4500MHz
- IF: DC-1500MHz
- LO Level: +13dBm
- Conversion Loss: 8.5dB
- RF Input: Up to +10dBm
- IP3: +19dBm
- SMA Connector

Picture



Description

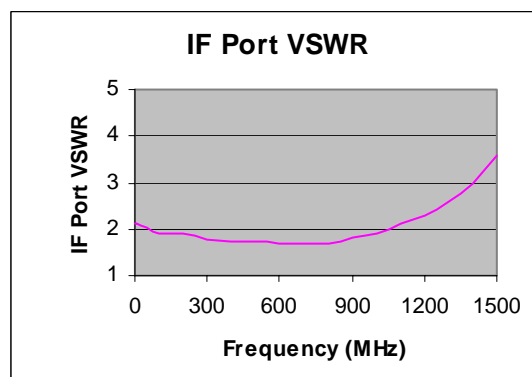
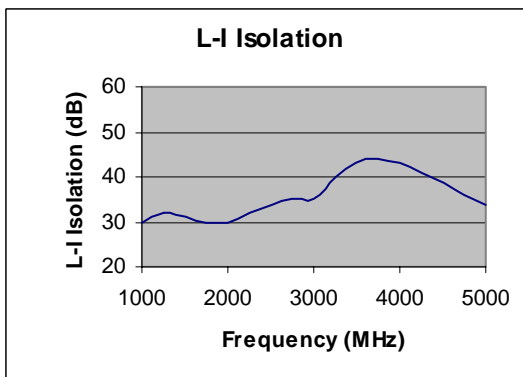
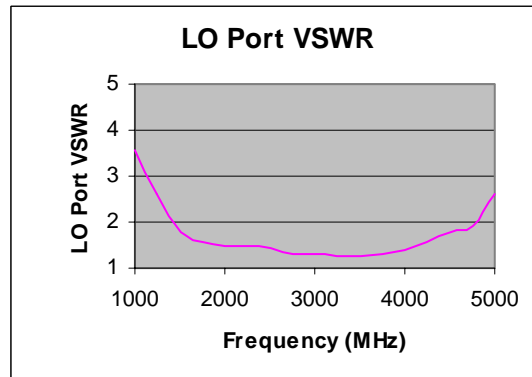
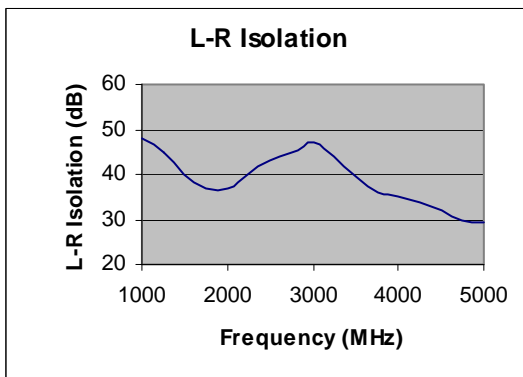
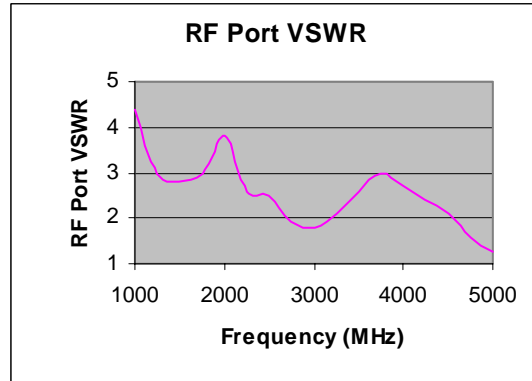
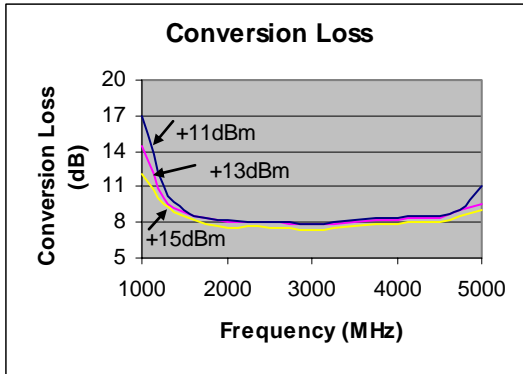
MXR-45M is a passive double balanced mixer operates with LO drive level range of +9dBm to +17dBm.

Electrical Specifications @ +25 °C, LO= +13dBm

| Parameter | Unit | Minimum | Typical | Maximum |
|----------------------|------|---------|---------|---------|
| Frequency Range | | | | |
| LO/RF | MHz | 1500 | | 4500 |
| IF | MHz | DC | | 1500 |
| Conversion Loss | dB | | 8.5 | 10 |
| LO-RF Isolation | | | | |
| 1500-4500 MHz | dB | 29 | 40 | |
| LO-IF Isolation | | | | |
| 1500-4500MHz | dB | 27 | 35 | |
| RF Input Power up to | dBm | +7 | +10 | |
| IP3 (Center Band) | dBm | +16 | +19 | |

Typical Performance @ +25 °C

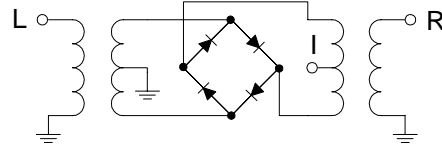
LO = +13dBm



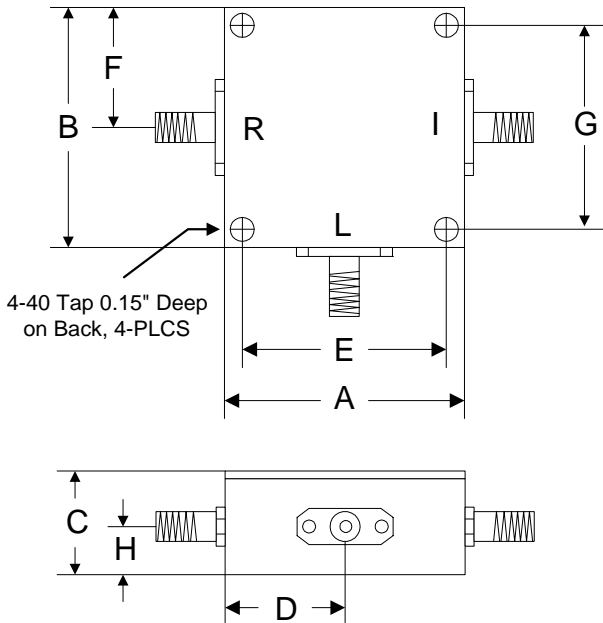
Absolute Maximum Ratings

| Parameter | Absolute Maximum |
|-----------------------|-------------------|
| RF/IF Power | +13dBm |
| LO Power | +27dBm |
| Operating Temperature | -40 °C to +85 °C |
| Storage Temperature | -65 °C to +150 °C |

Schematic



Outline



| | A | B | C | D | E | F | G | H |
|------|-------|-------|-------|-------|-------|-------|-------|-------|
| Inch | 1.250 | 1.250 | 0.563 | 0.625 | 1.000 | 0.625 | 1.000 | 0.250 |
| mm | 31.75 | 31.75 | 14.29 | 15.88 | 25.40 | 15.88 | 25.40 | 6.35 |