

Level 10

1-2700MHz Frequency Mixer

Features

- LO/RF: 1-2700MHz
- IF: 1-2000MHz
- LO Level: +10dBm
- Conversion Loss: 7dB
- RF Input: Up to +6dBm
- Input IP3: +20dBm
- SMA Connector

Picture



Description

MXR-27 is a passive wide band double balanced mixer operates with LO drive level range of +7dBm to +13dBm.

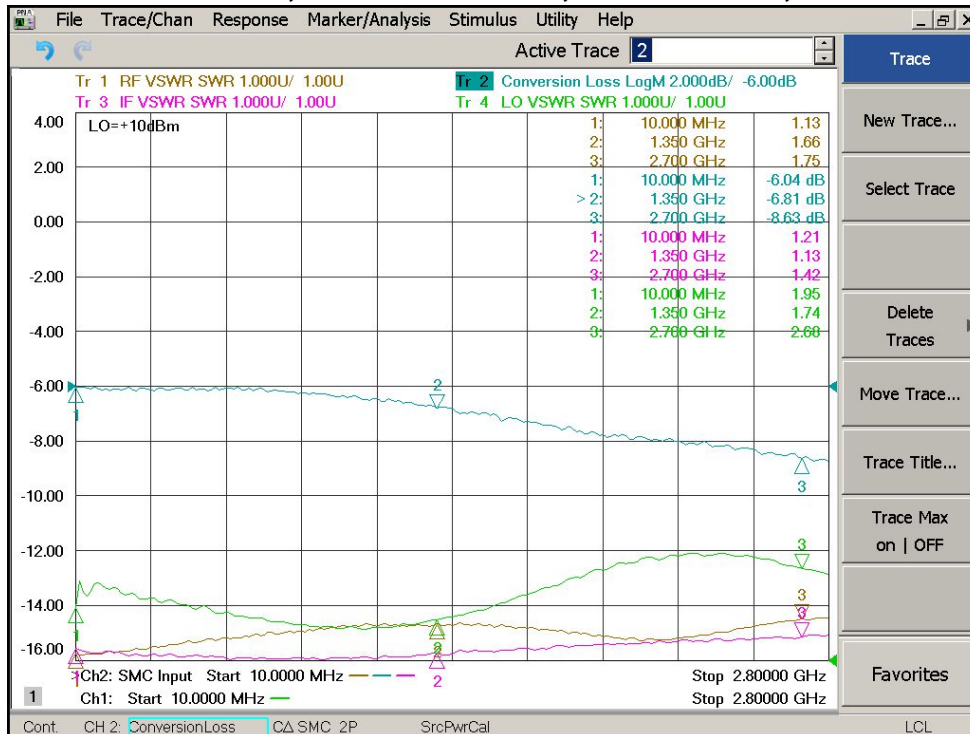
Electrical Specifications @ +25°C, IF=100MHz, LO= +10dBm, 50 Ω

Parameter	Unit	Minimum	Typical	Maximum
Frequency Range				
LO/RF	MHz	1		2700
IF	MHz	1		2000
Conversion Loss	dB		7.0	9.5
LO-RF Isolation				
10-2000 MHz	dB	24	39	
10-2500MHz	dB	18	37	
LO-IF Isolation				
10-2000MHz	dB	20	36	
10-2500MHz	dB	16	34	
RF-IF Isolation				
10-2200MHz	dB	20	25	
RF VSWR			2.0:1	2.5:1
IF VSWR			1.5:1	2.0:1
RF Input Power up to	dBm	+3	+6	
IIP3 (Center Band)	dBm	+17	+20	

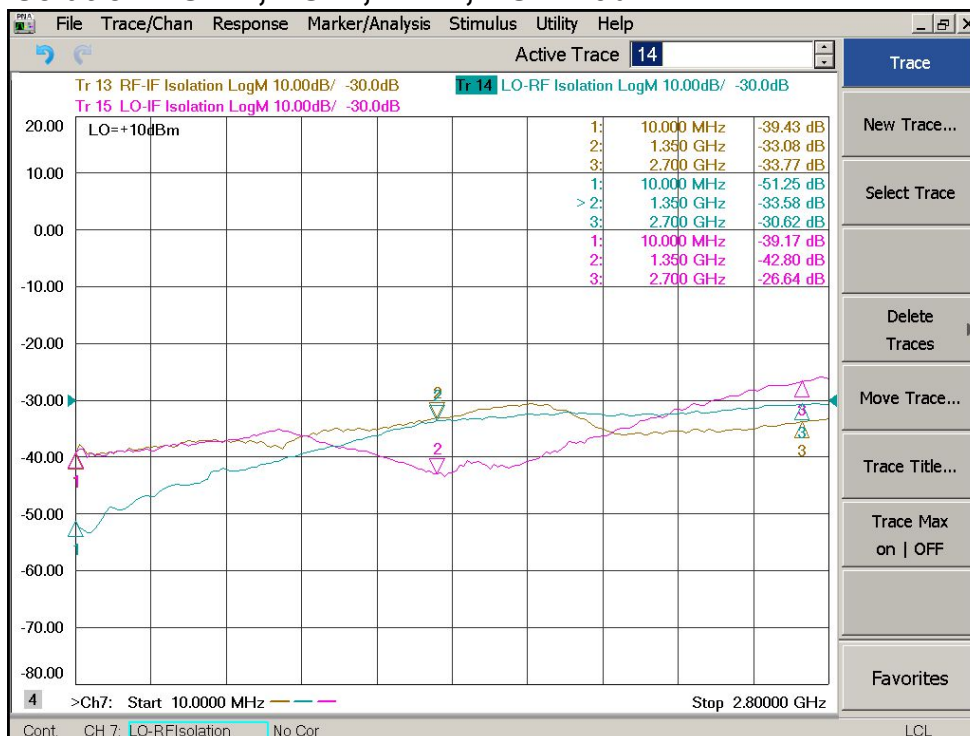
Level 10

1-2700MHz Frequency Mixer

Conversion Loss, RF/IF/LO VSWR, LO=+10dBm, IF=100MHz



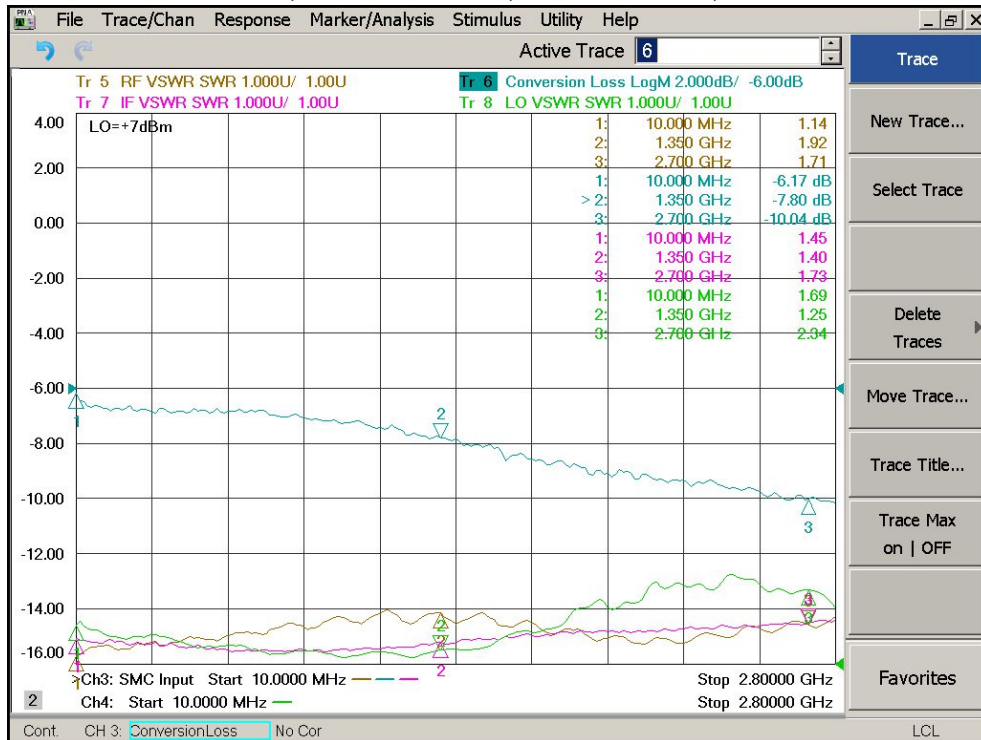
Isolation LO-RF, LO-IF, RF-IF, LO=+10dBm



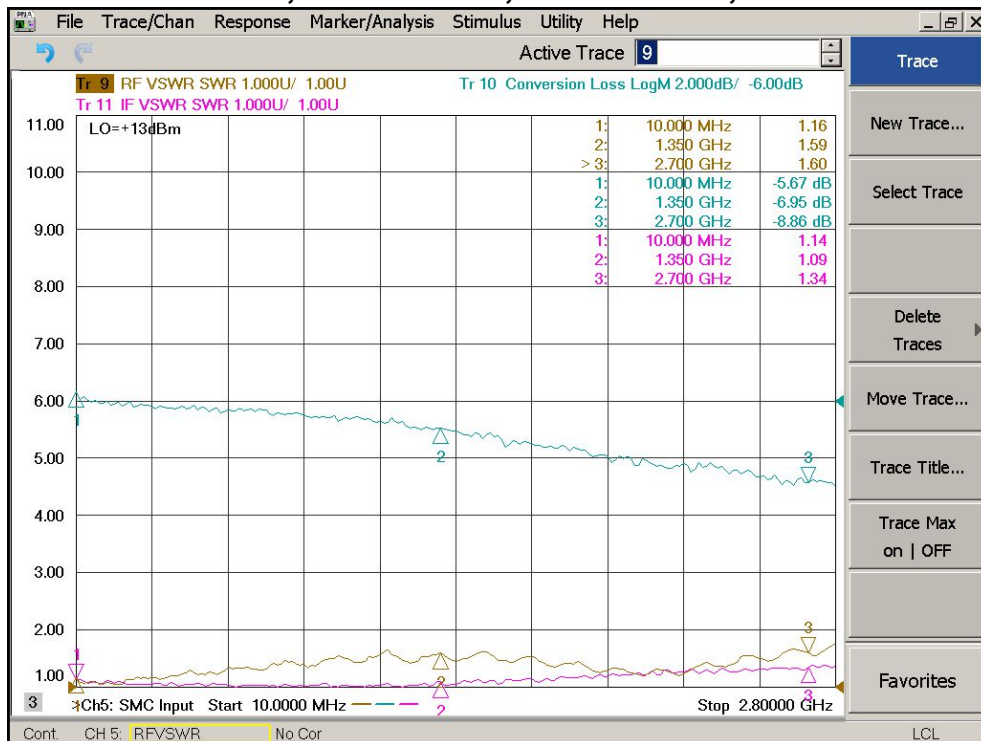
Level 10

1-2700MHz Frequency Mixer

Conversion Loss, RF/IF VSWR, LO=+7dBm, IF=100MHz



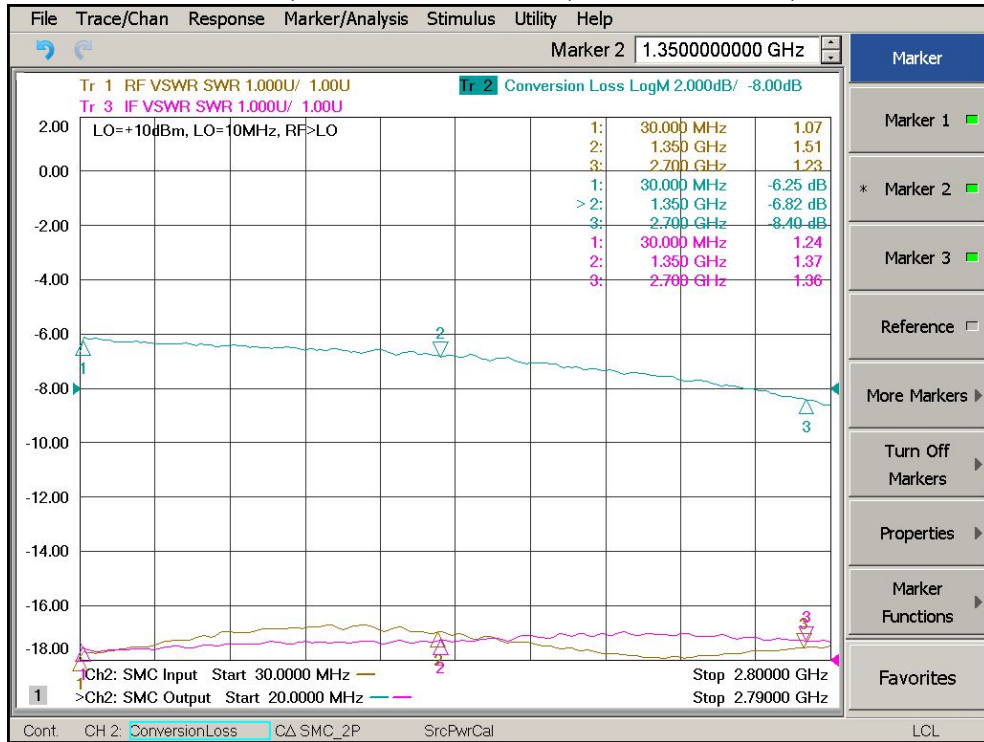
Conversion Loss, RF/IF VSWR, LO=+13dBm, IF=100MHz



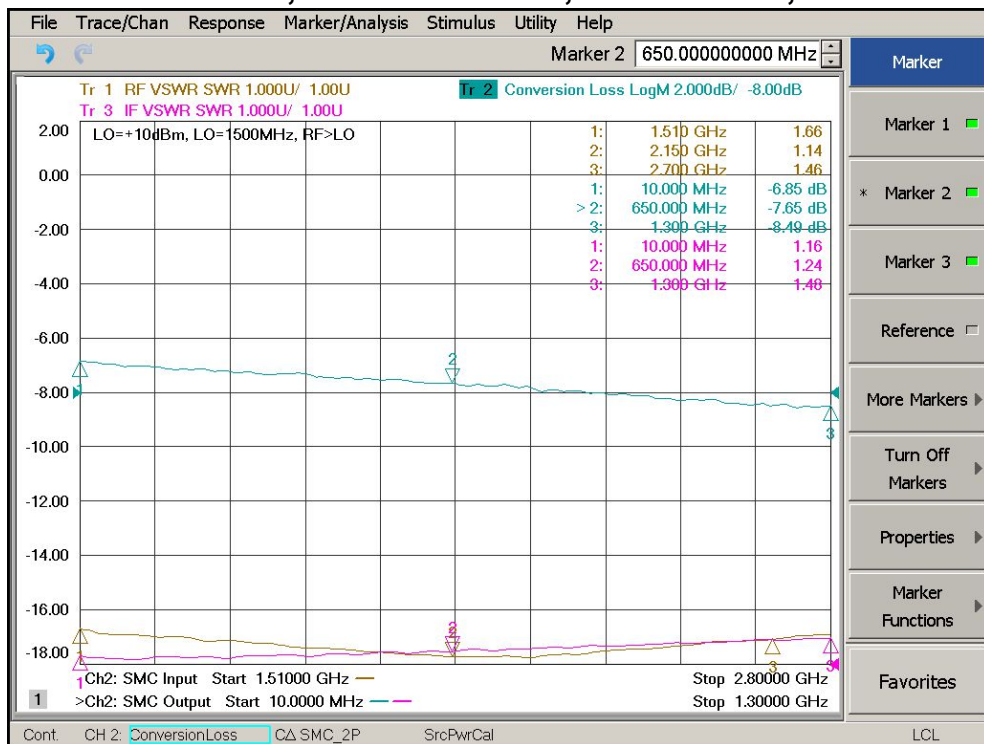
Level 10

1-2700MHz Frequency Mixer

Conversion Loss, RF/IF/LO VSWR, LO=+10dBm, LO=10MHz



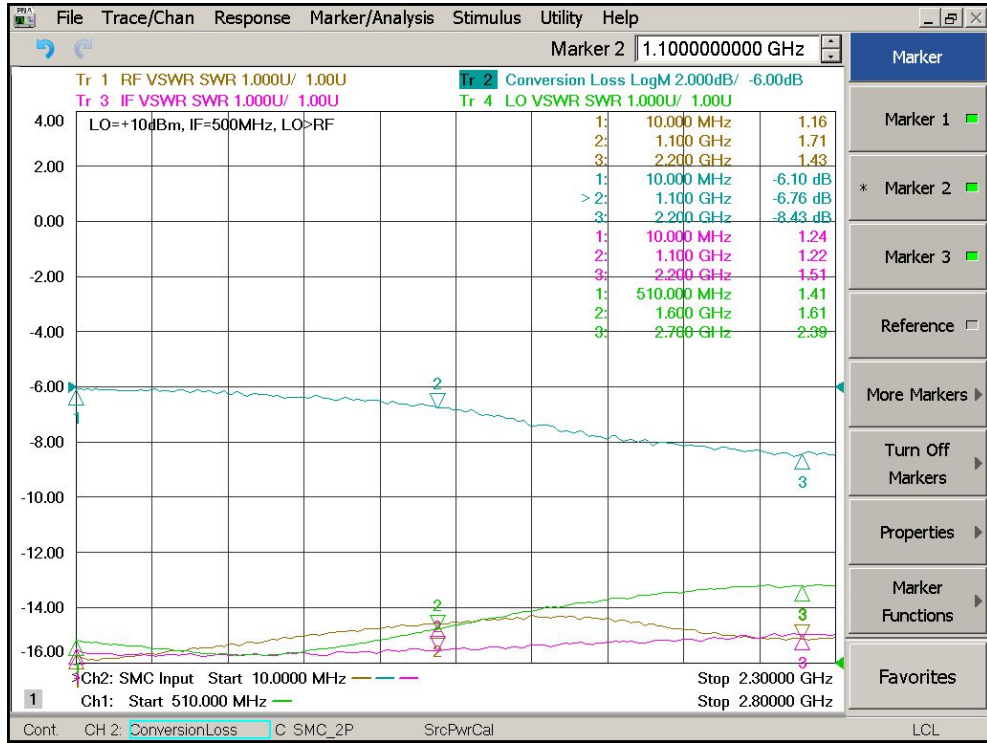
Conversion Loss, RF/IF/LO VSWR, LO=+10dBm, LO=1500MHz



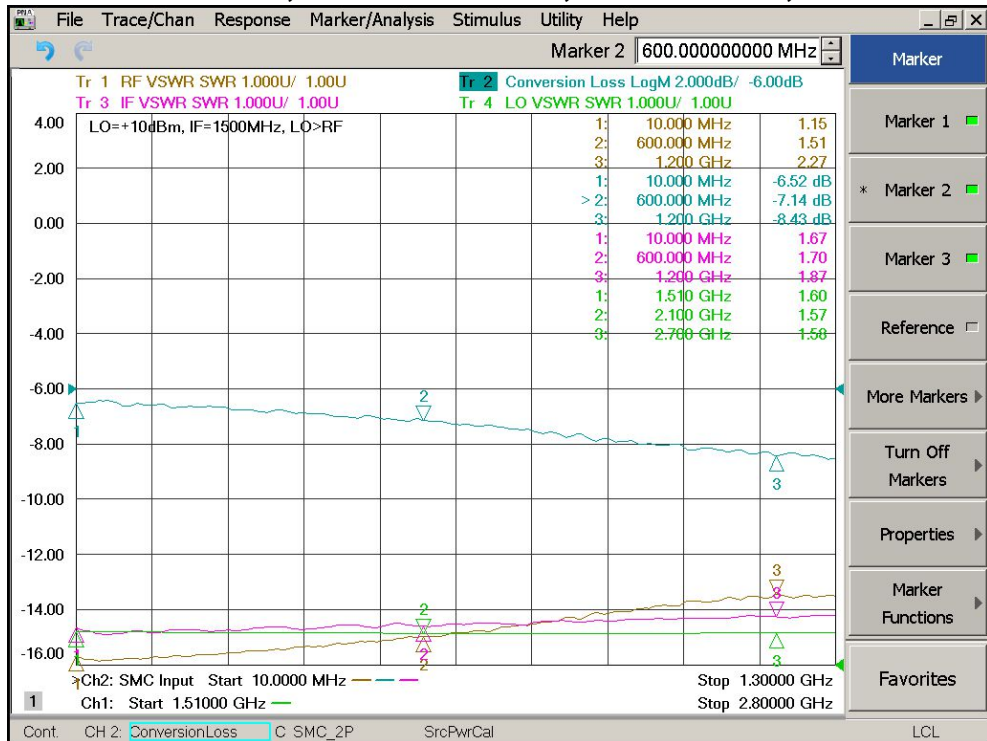
Level 10

1-2700MHz Frequency Mixer

Conversion Loss, RF/IF/LO VSWR, LO=+10dBm, IF=500MHz



Conversion Loss, RF/IF/LO VSWR, LO=+10dBm, IF=1500MHz



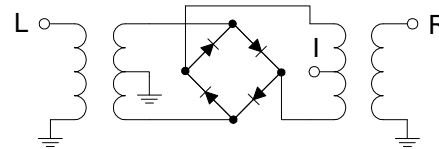
Level 10

1-2700MHz Frequency Mixer

Absolute Maximum Ratings

Parameter	Absolute Maximum
RF Input Power	+16dBm
Operating Temperature	-40 °C to +85 °C
Storage Temperature	-60 °C to +100 °C

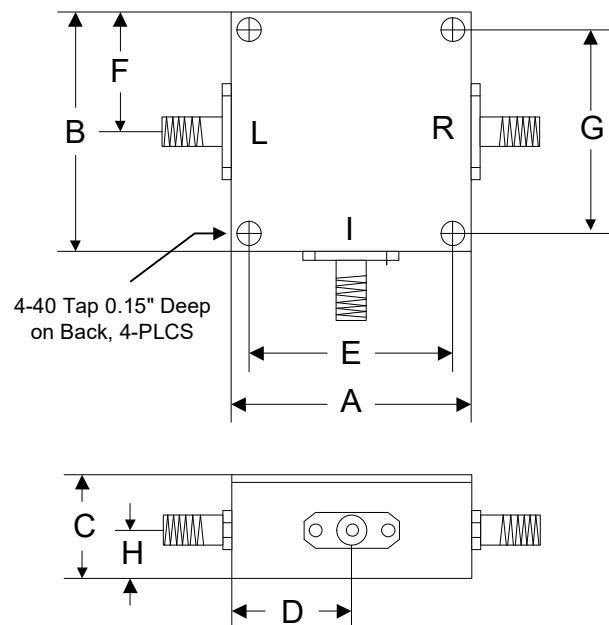
Schematic



ESD Sensitive Material



Outline



	A	B	C	D	E	F	G	H
Inch	1.250	1.250	0.563	0.625	1.000	0.625	1.000	0.250
mm	31.75	31.75	14.29	15.88	25.40	15.88	25.40	6.35