

Level 17

10-2000MHz Frequency Mixer

Features

- LO/RF: 10-2000MHz
- IF: DC-2000MHz
- LO Level: +17dBm
- Conversion Loss: 7.0dB
- RF Input: Up to +13dBm
- IP3: +27dBm
- SMA Connector

Picture



Description

MXR-20H is a high IP3 passive double balanced mixer operates with LO drive level range of +14dBm to +20dBm.

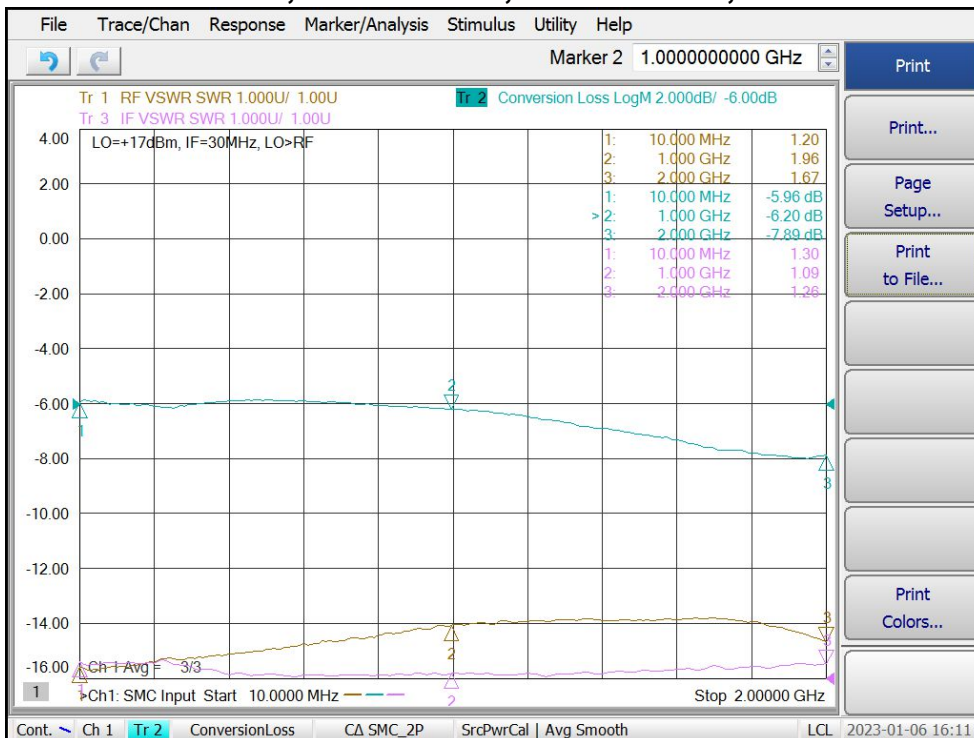
Electrical Specifications @ +25 °C, IF=30MHz, LO= +17dBm, 50 Ω

Parameter	Unit	Minimum	Typical	Maximum
Frequency Range				
LO/RF	MHz	10		2000
IF	MHz	DC		2000
Conversion Loss	dB		7.0	9.0
LO-RF Isolation				
10-100 MHz	dB	32	40	
100-1000 MHz	dB	35	43	
1000-2000 MHz	dB	25	35	
LO-IF Isolation				
10-100 MHz	dB	32	40	
100-1000 MHz	dB	25	35	
1000-2000 MHz	dB	25	35	
RF-IF Isolation	dB	22	30	
RF VSWR			2.0:1	2.5:1
IF VSWR			1.3:1	1.8:1
RF Input Power up to	dBm	+10	+13	
IP3 (Center Band)	dBm	+24	+27	

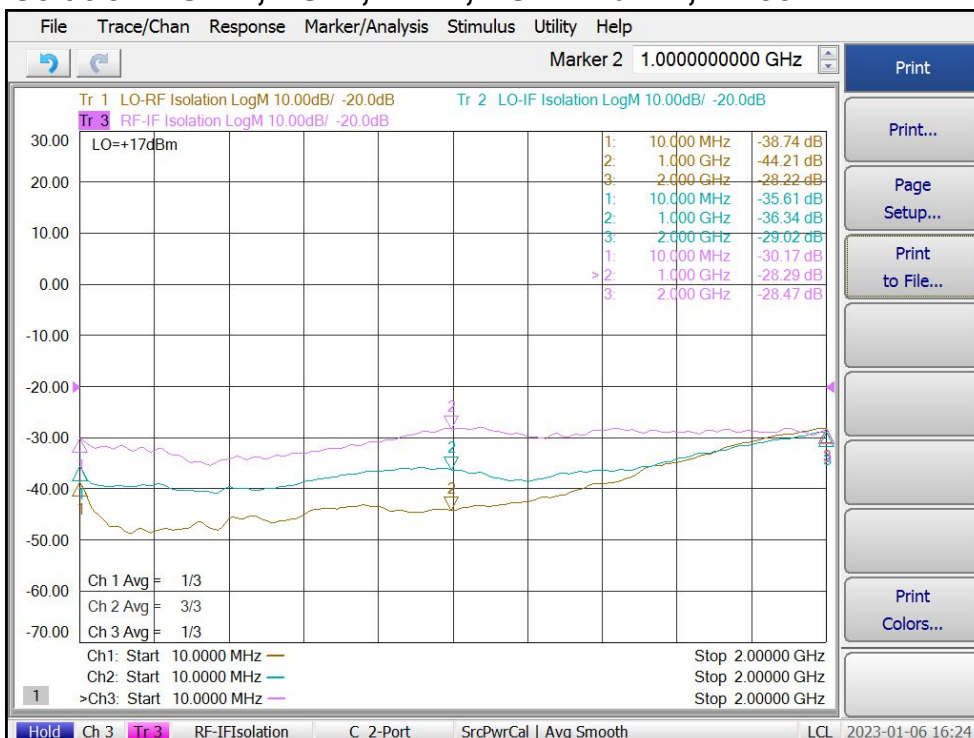
Level 17

10-2000MHz Frequency Mixer

Conversion Loss, RF/IF VSWR, LO=+17dBm, IF=30MHz



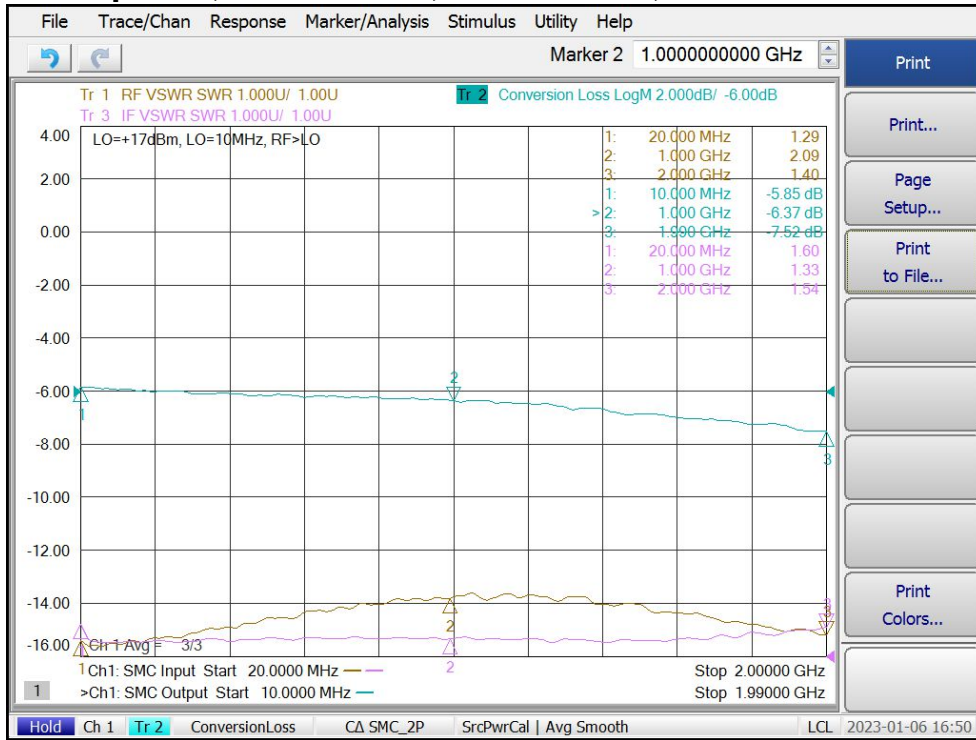
Isolation LO-RF, LO-IF, RF-IF, LO=+17dBm, IF=30MHz



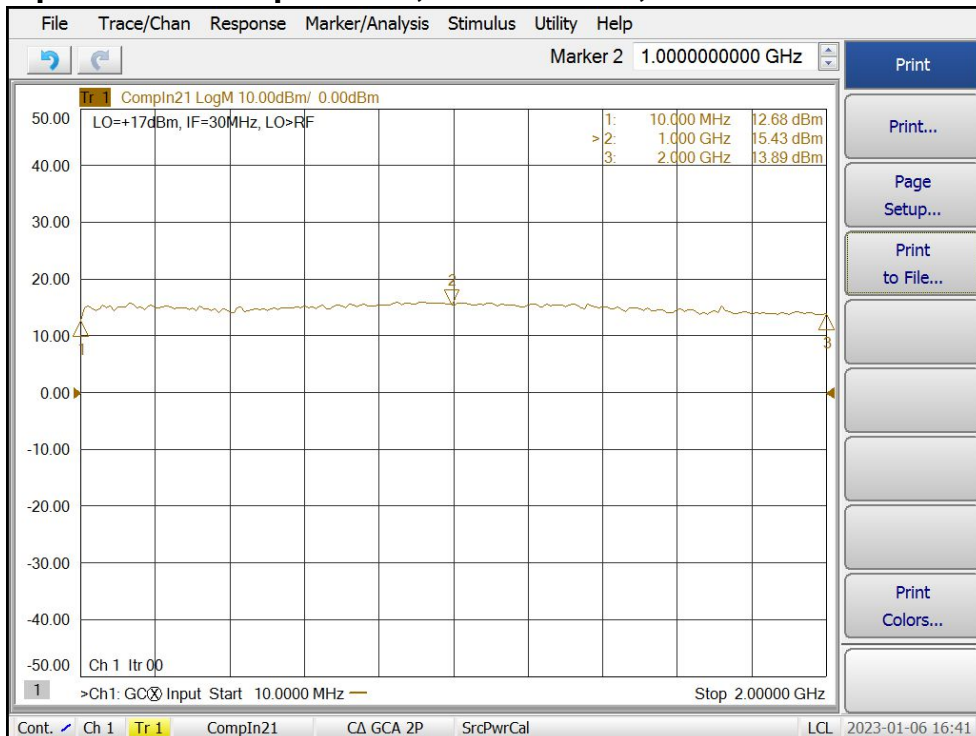
Level 17

10-2000MHz Frequency Mixer

IF Response, RF/IF VSWR, LO=+17dBm, LO=10MHz



Input P1dB Compression, LO=+17dBm, IF=30MHz



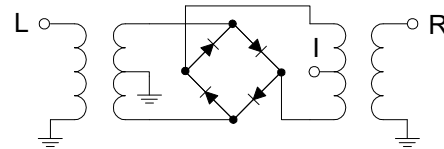
Level 17

10-2000MHz Frequency Mixer

Absolute Maximum Ratings

Parameter	Absolute Maximum
RF Power	+23dBm
Peak IF Current	40mA
Operating Temperature	-40 °C to +85 °C
Storage Temperature	-55 °C to +100 °C

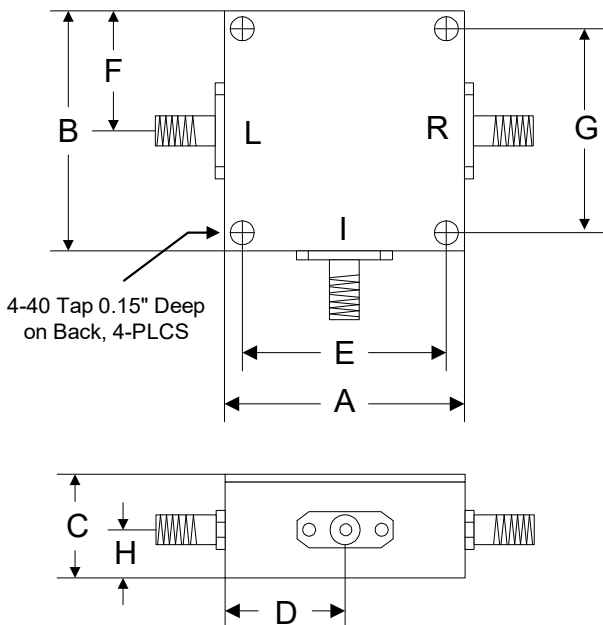
Schematic



ESD Sensitive Material



Outline



	A	B	C	D	E	F	G	H
Inch	1.250	1.250	0.563	0.625	1.000	0.625	1.000	0.250
mm	31.75	31.75	14.29	15.88	25.40	15.88	25.40	6.35