

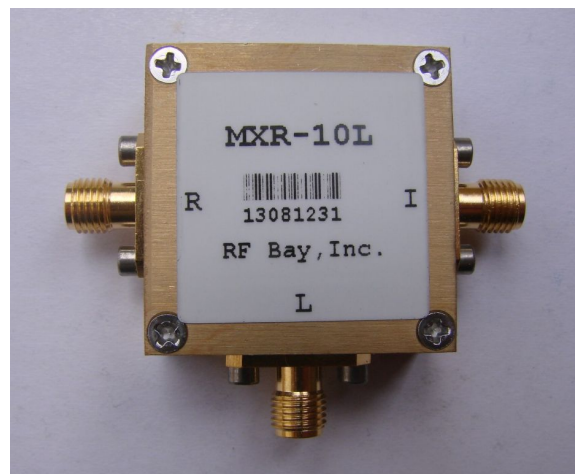
Level 4

10-1000MHz Frequency Mixer

Features

- LO/RF: 10-1000MHz
- IF: DC-800MHz
- LO Level: +4dBm
- Conversion Loss: 7.2dB
- RF Input: Up to +1dBm
- Input IP3: +16dBm
- SMA Connector

Picture



Description

MXR-10L is a passive High IP3 double balanced mixer operates with LO drive level range of +1dBm to +7dBm.

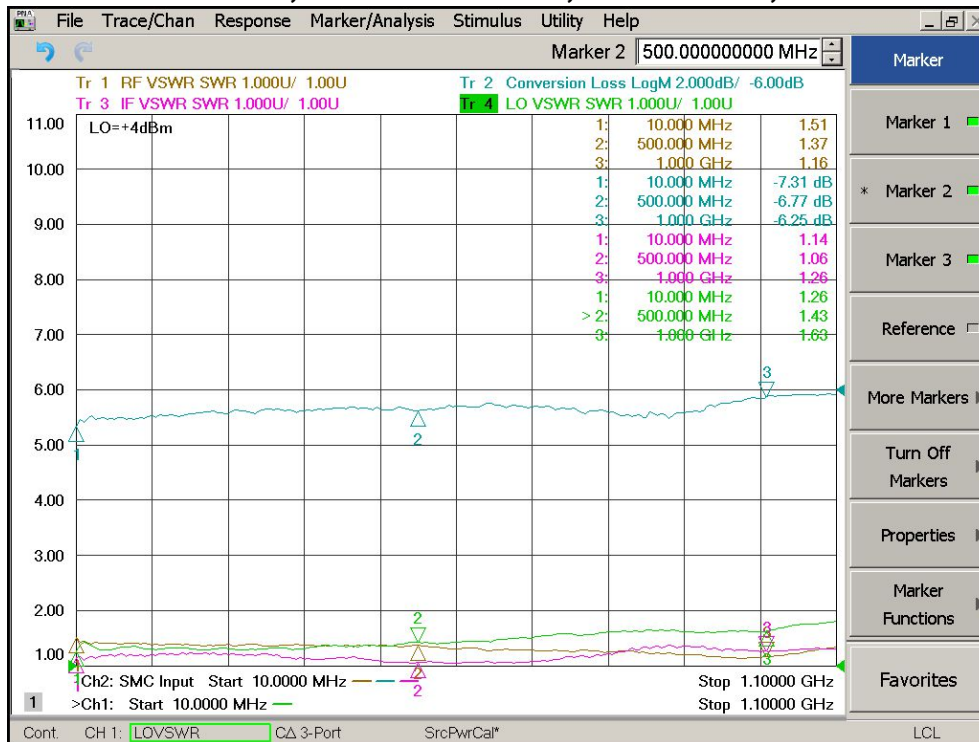
Electrical Specifications @ +25°C, IF=10MHz, LO= +4dBm, 50 Ω

Parameter	Unit	Minimum	Typical	Maximum
Frequency Range				
LO/RF	MHz	10		1000
IF	MHz	DC		800
Conversion Loss	dB		7.2	8.2
LO-RF Isolation				
5-50 MHz	dB	55	75	
50-500MHz	dB	40	60	
500-1000MHz	dB	27	47	
LO-IF Isolation				
5-50MHz	dB	26	40	
50-500MHz	dB	20	33	
500-1000MHz	dB	13	24	
RF VSWR			1.5:1	2.0:1
IF VSWR			1.5:1	2.0:1
RF Input Power up to	dBm	-1	+1	
IIP3 (Center Band)	dBm	+13	+16	

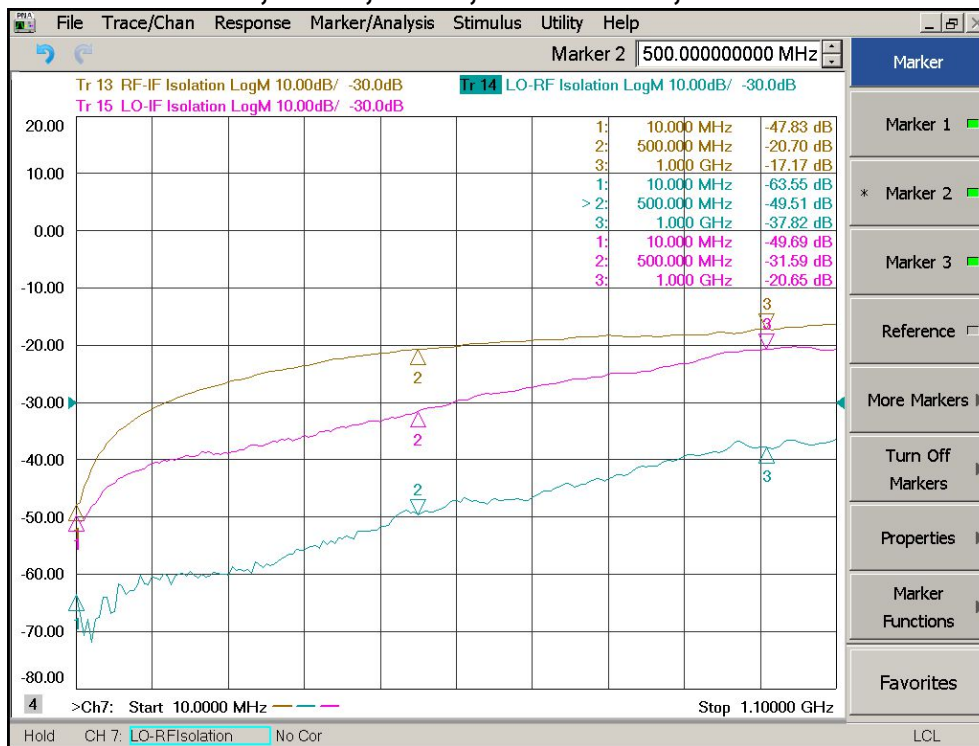
Level 4

10-1000MHz Frequency Mixer

Conversion Loss, RF/IF/LO VSWR, LO=+4dBm, IF=10MHz



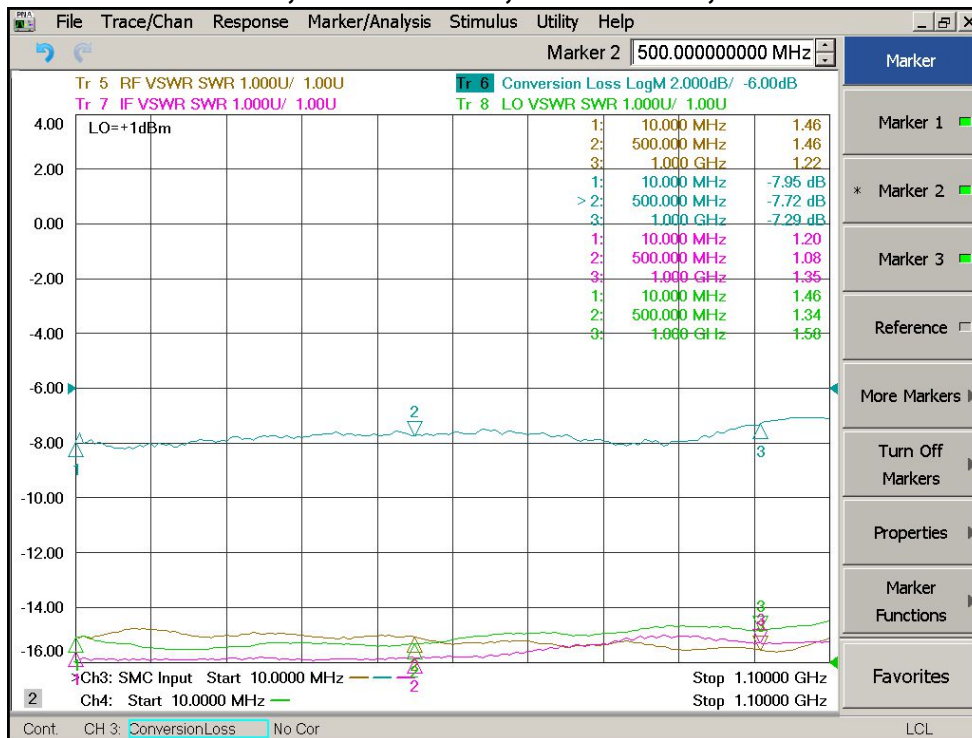
Isolation LO-RF, LO-IF, RF-IF, LO=+4dBm, IF=10MHz



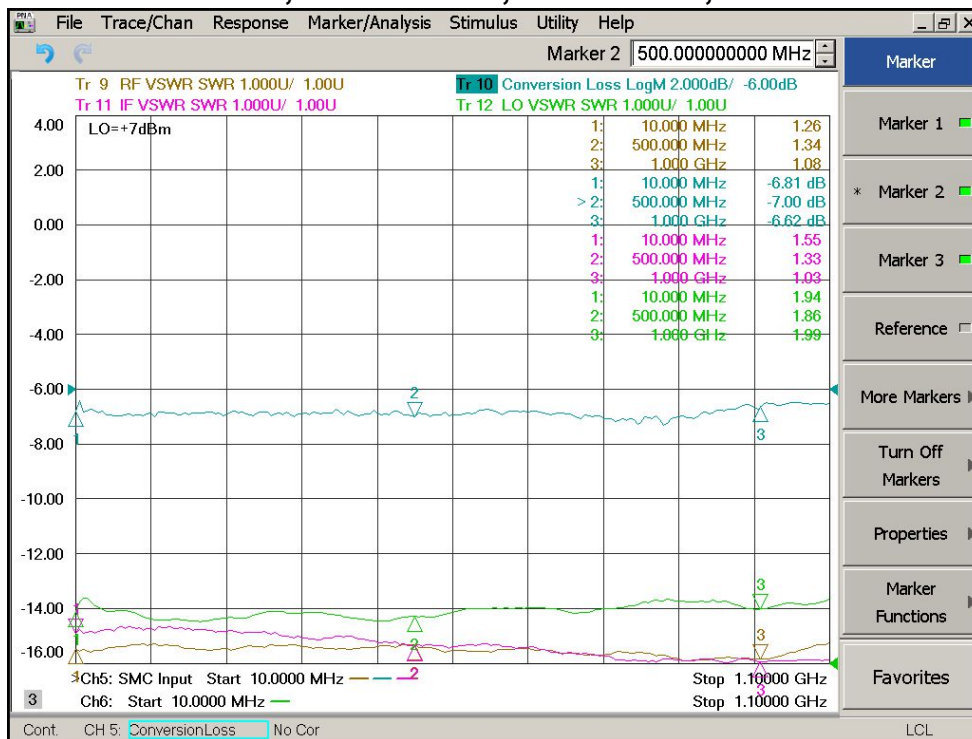
Level 4

10-1000MHz Frequency Mixer

Conversion Loss, RF/IF VSWR, LO=+1dBm, IF=10MHz



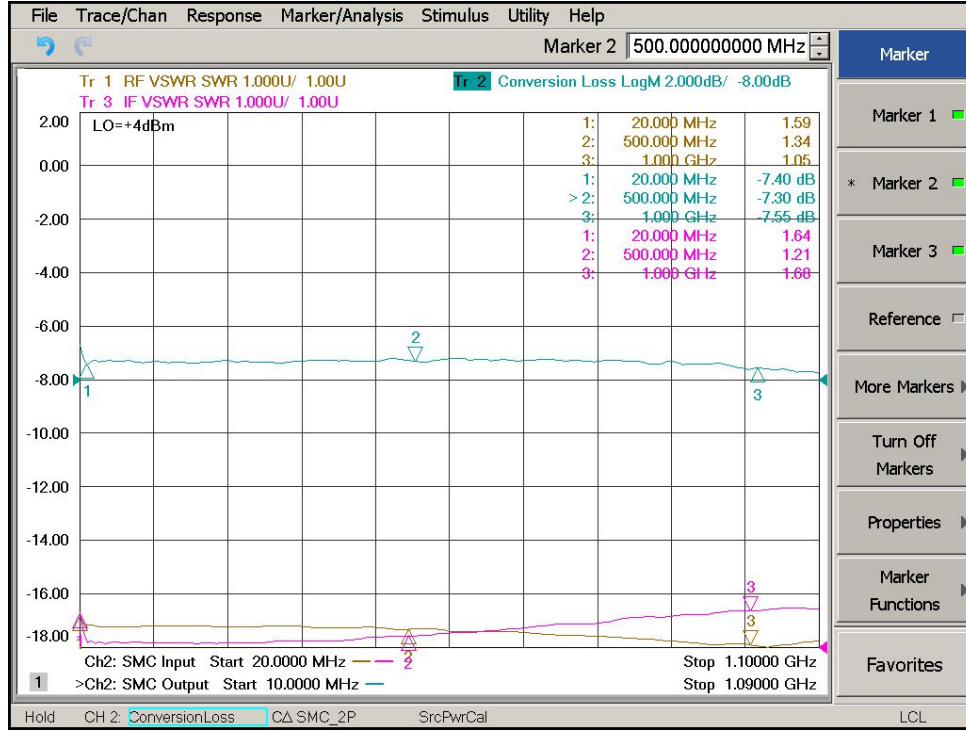
Conversion Loss, RF/IF VSWR, LO=+7dBm, IF=10MHz



Level 4

10-1000MHz Frequency Mixer

IF Bandwidth, RF/IF VSWR, LO=+4dBm, LO=10MHz



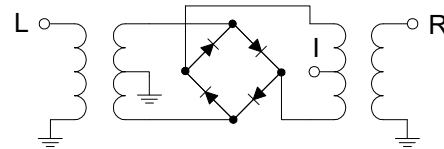
Level 4

10-1000MHz Frequency Mixer

Absolute Maximum Ratings

Parameter	Absolute Maximum
RF Power	+17dBm
Peak IF Current	40mA
Operating Temperature	-40 °C to +85 °C
Storage Temperature	-55 °C to +100 °C

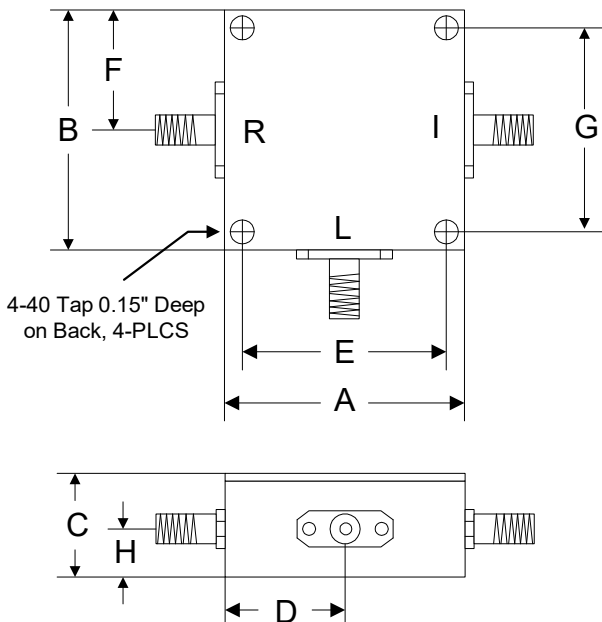
Schematic



ESD Sensitive Material



Outline



	A	B	C	D	E	F	G	H
Inch	1.250	1.250	0.563	0.625	1.000	0.625	1.000	0.250
mm	31.75	31.75	14.29	15.88	25.40	15.88	25.40	6.35