

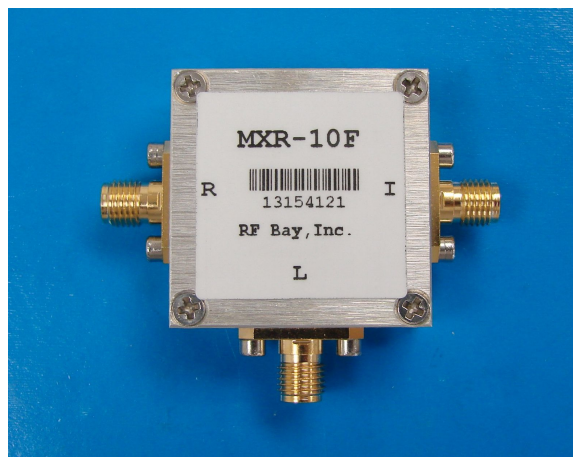
Level 10

20-1000MHz Frequency Mixer

Features

- LO/RF: 20-1000MHz
- IF: DC-1000MHz
- LO Level: +10dBm
- Conversion Loss: 6.5dB
- RF Input: Up to +5dBm
- IP3: +20dBm
- SMA Connector

Picture



Description

MXR-10F is a passive double balanced mixer operates with LO drive level range of +7dBm to +13dBm.

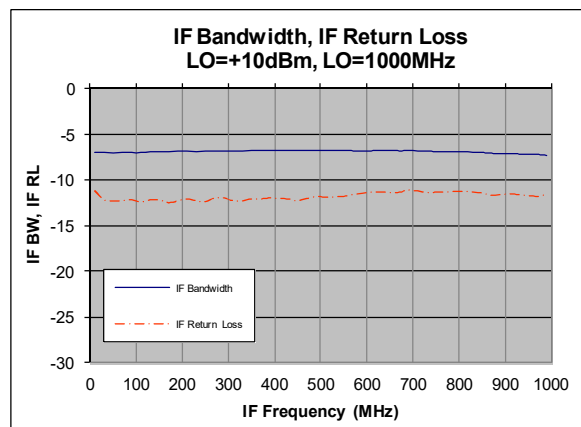
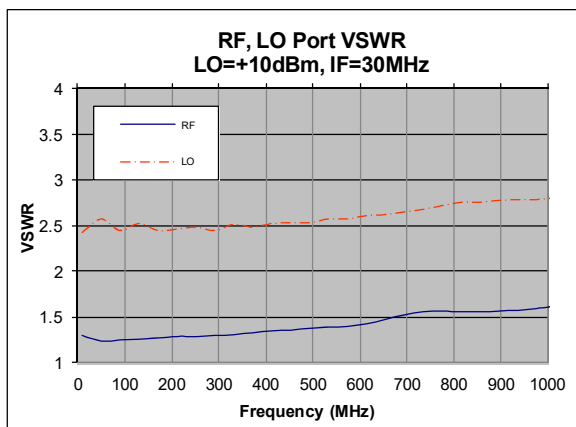
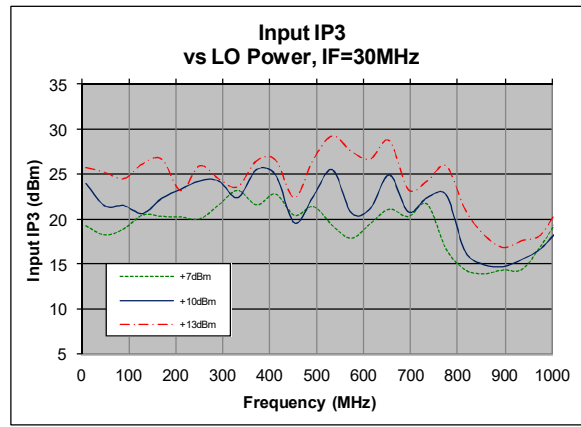
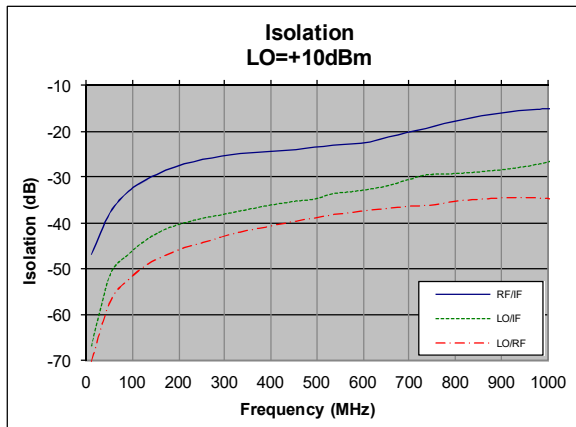
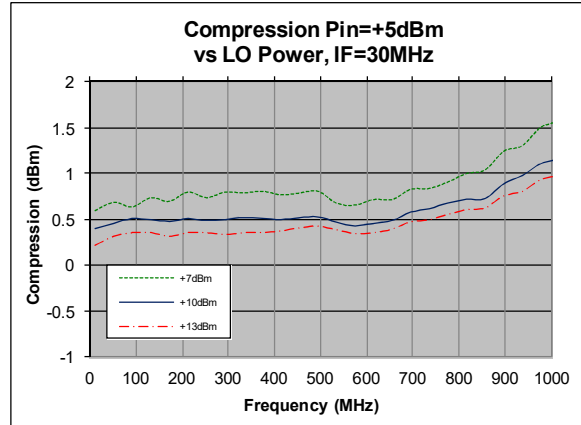
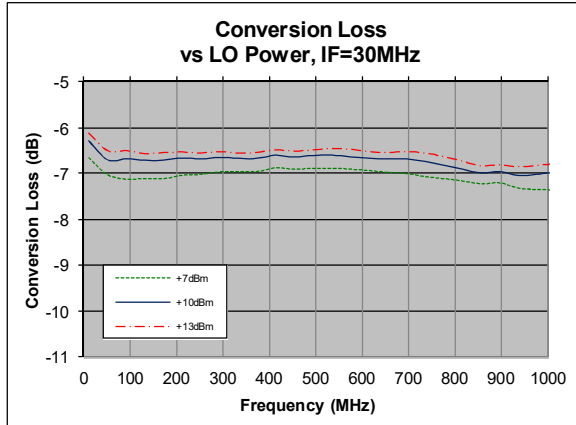
Electrical Specifications @ +25 °C, LO= +10dBm, IF=30MHz, 50 Ω

Parameter	Unit	Minimum	Typical	Maximum
Frequency Range				
LO/RF	MHz	20		1000
IF	MHz	DC		1000
Conversion Loss	dB		6.5	9.0
LO-RF Isolation				
20-200MHz	dB	40	60	
200-500MHz	dB	25	48	
500-1000MHz	dB	20	37	
LO-IF Isolation				
20-200MHz	dB	30	45	
200-500MHz	dB	20	35	
500-1000MHz	dB	11	27	
RF Input Power up to	dBm		+5	
Input IP3 (Center Band)	dBm		+20	

Level 10

20-1000MHz Frequency Mixer

Typical Performance @ +25 °C



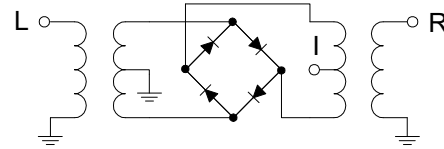
Level 10

20-1000MHz Frequency Mixer

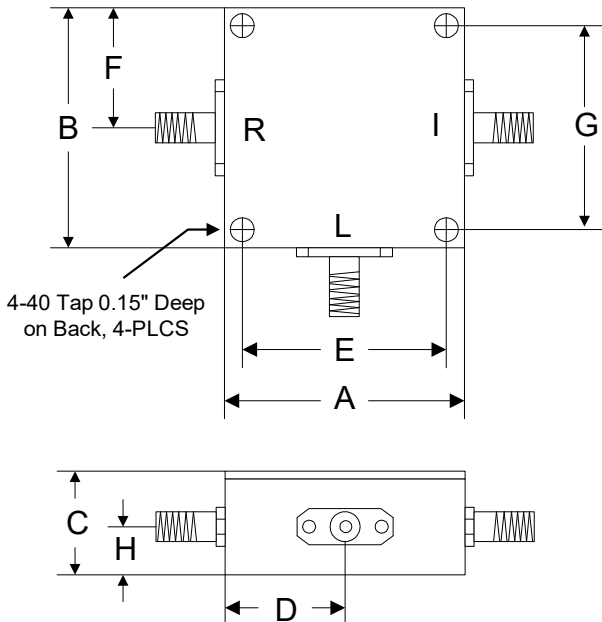
Absolute Maximum Ratings

Parameter	Absolute Maximum
RF Power	+17dBm
Peak IF Current	40mA
Operating Temperature	-40 °C to +85 °C
Storage Temperature	-55 °C to +100 °C

Schematic



Outline



	A	B	C	D	E	F	G	H
Inch	1.250	1.250	0.563	0.625	1.000	0.625	1.000	0.250
mm	31.75	31.75	14.29	15.88	25.40	15.88	25.40	6.35