

MPA Series

100-1000MHz 2W RF Power Amplifier

Features

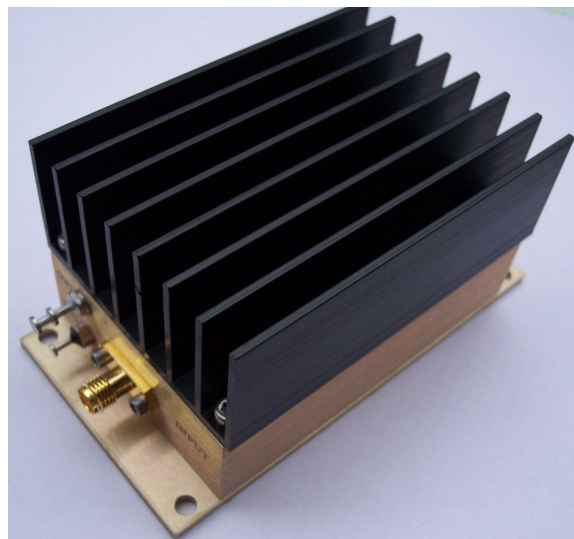
- Frequency Range: 100-1000MHz
- Gain: 33dB
- P_{3dB}: +33dBm (2Watt)
- IP3: +46dBm
- Noise Figure: 4.5dB
- DC Power: +15V/1A
- DC Reverse Protected
- SMA Connector

Performance measured @ 500MHz

Description

MPA-10-33 is a 2Watt (+33dBm) output RF Power Amplifier operating from single 15V DC power supply with frequency from 100MHz to 1000MHz.

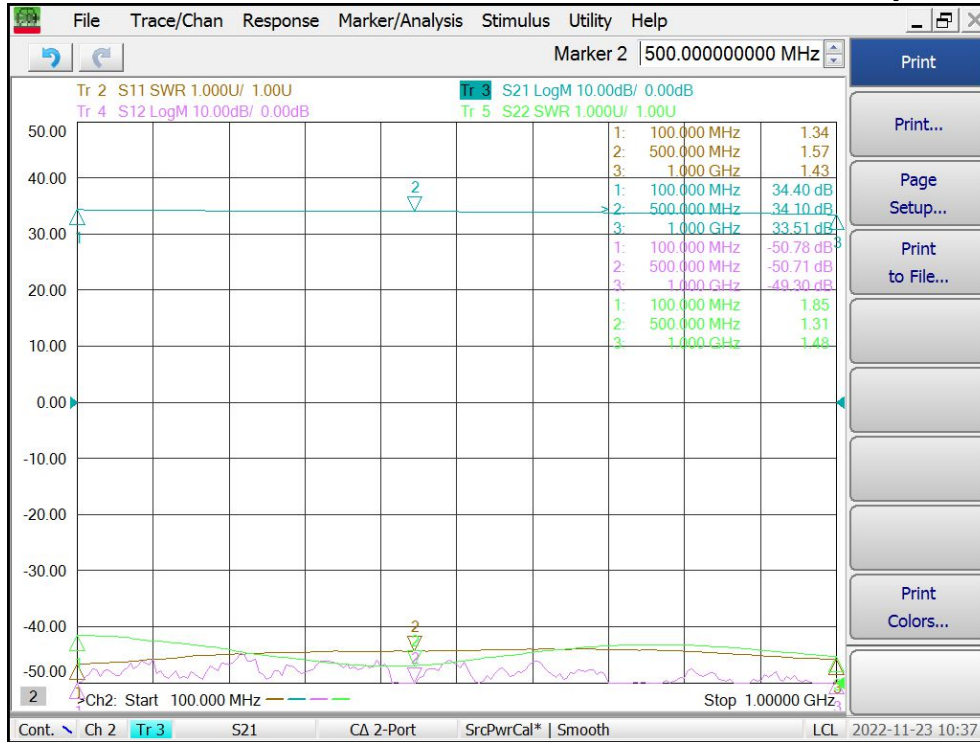
Picture



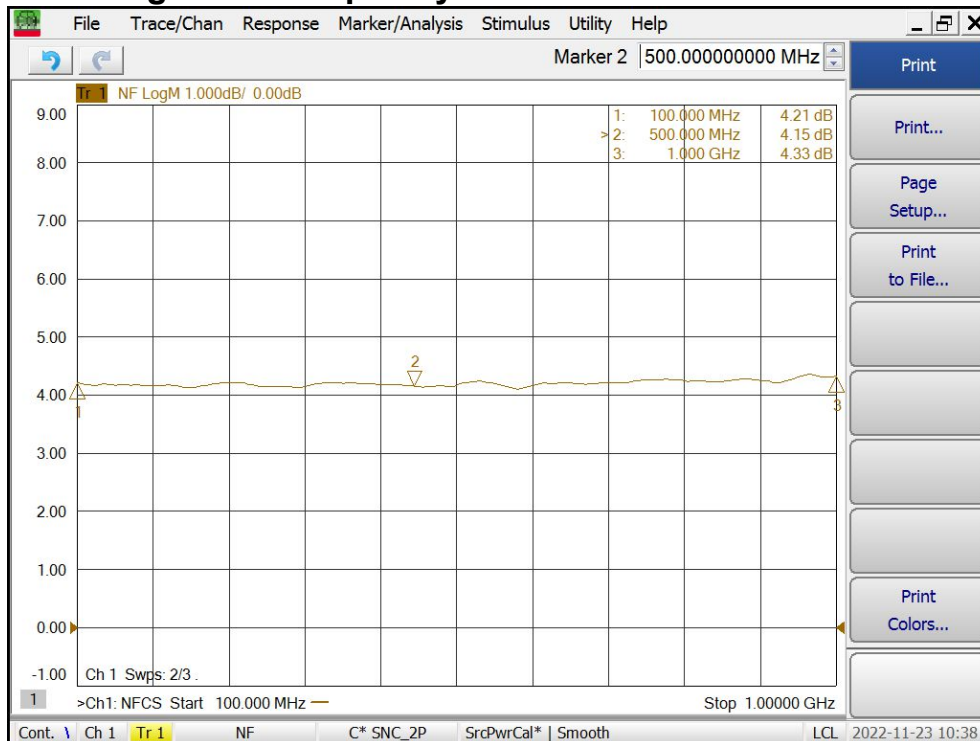
Electrical Specifications @ +25°C, Z_{IN} = Z_{OUT} = 50Ω, DC Supply = +15V

Parameter	Unit	Minimum	Typical	Maximum
Frequency Range	MHz	100		1000
Small Signal Gain S ₂₁	f = 100MHz		34.4	
	f = 500MHz	33.0	34.0	
	f = 1000MHz		33.5	
Gain Flatness	dB		± 1.5	± 2.0
Output Power P _{3dB}	f = 500MHz	+33	+34	
Output IP3	f = 500MHz	+44	+46	
Reverse Isolation S ₁₂	f = 500MHz	-45	-50	
Noise Figure	f = 500MHz		4.5	6.0
VSWR	Input VSWR S ₁₁ f = 500MHz		1.6:1	2.0:1
	Output VSWR S ₂₂ f = 500MHz		1.3:1	2.0:1
DC Power Supply Voltage	V	14	15	16
DC Power Supply Current	mA		1000	1200

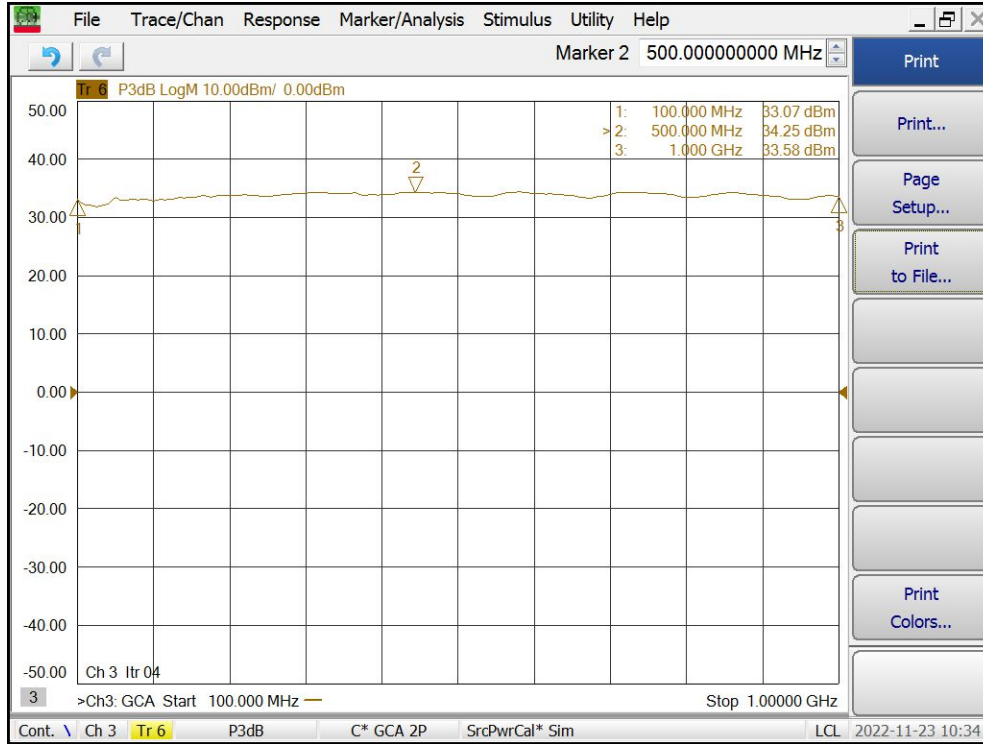
Gain S21, Isolation S12, Return Loss S11, S22 vs Frequency



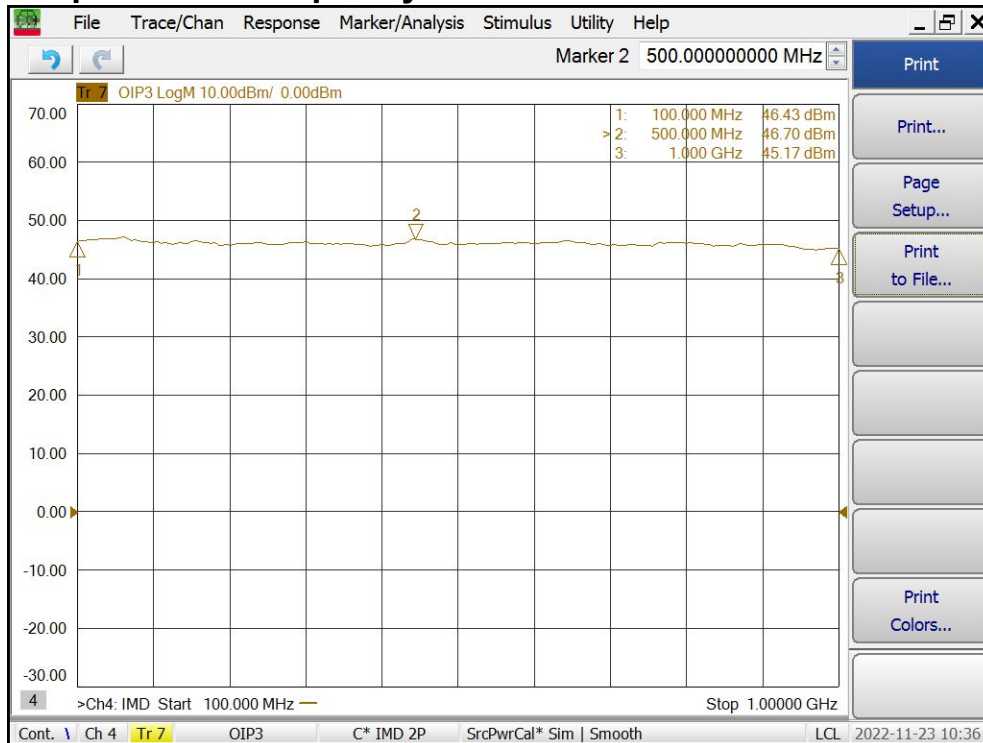
Noise Figure vs Frequency



Output P3dB vs Frequency



Output IP3 vs Frequency



MPA Series

100-1000MHz 2W RF Power Amplifier

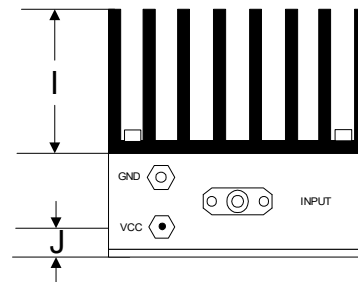
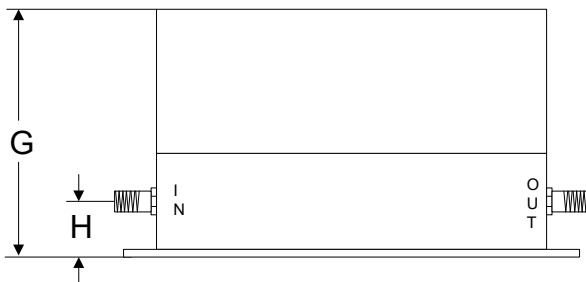
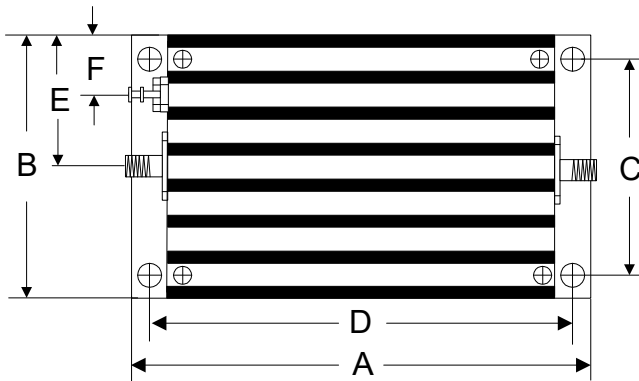
Absolute Maximum Ratings

Parameter	Absolute Maximum
RF Input Power	+12dBm
DC Supply Voltage	+16V
Operating Temperature	-40 °C to +85 °C
Storage Temperature	-55 °C to +125 °C

ESD Sensitive Material



Outline



	A	B	C	D	E	F	G	H	I	J
Inch	3.750	2.000	1.750	3.400	1.000	0.400	1.913	0.375	1.000	0.238
mm	92.25	50.80	44.45	86.36	25.40	10.16	48.59	9.53	25.40	6.03