

## MPA Series

## 500-1500MHz 2W RF Power Amplifier

### Features

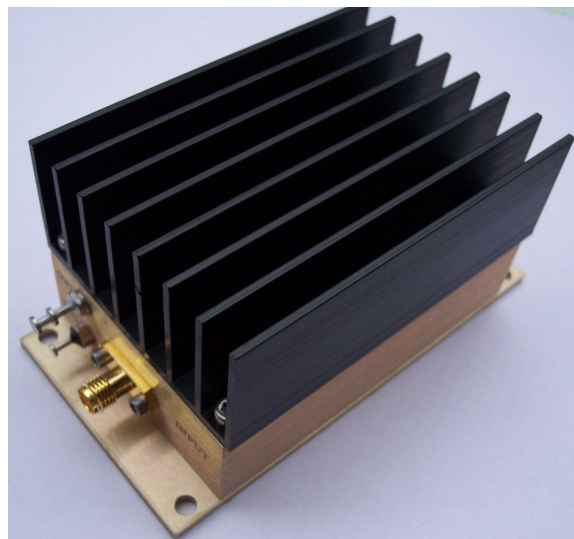
- Frequency Range: 500-1500MHz
- Gain: 30dB
- P<sub>3dB</sub>: +33dBm (2Watt)
- IP3: +48dBm
- Noise Figure: 4.5dB
- DC Power: +15V/900mA
- DC Reverse Protected
- SMA Connector

Performance measured @ 1000MHz

### Description

MPA-10-2W is a 2Watt (+33dBm) output RF Power Amplifier operating from single 15V DC power supply with frequency from 500MHz to 1500MHz.

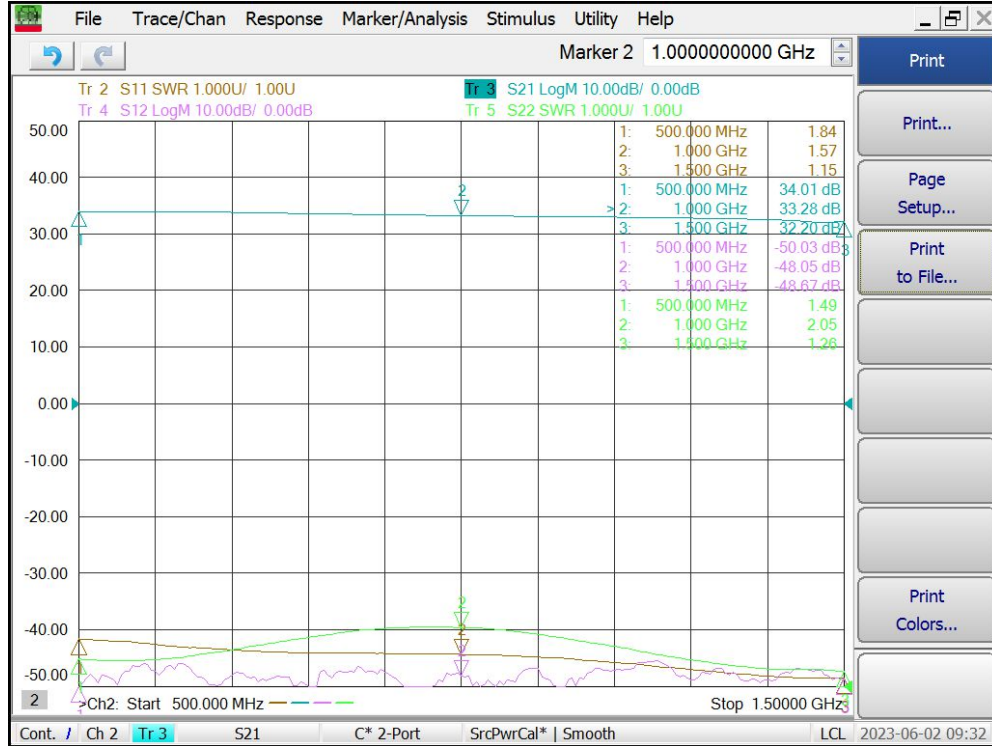
### Picture



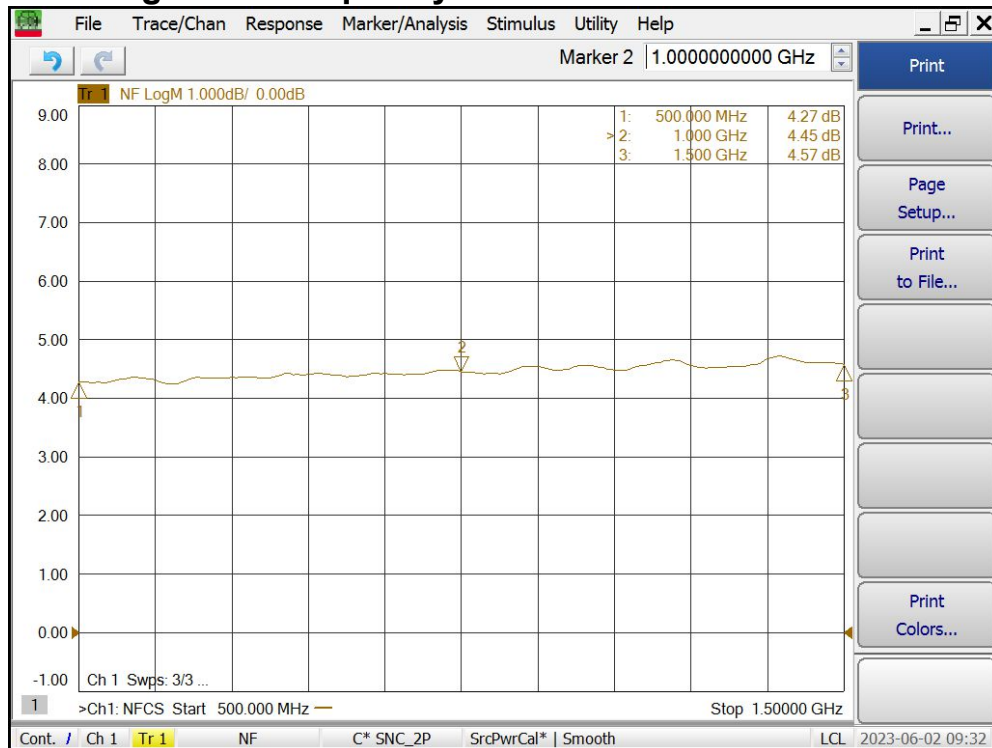
### Electrical Specifications @ +25°C, Z<sub>IN</sub> = Z<sub>OUT</sub> = 50Ω, DC Supply = +15V

Parameter	Unit	Minimum	Typical	Maximum
Frequency Range	MHz	500		1500
Small Signal Gain S <sub>21</sub>	f = 500MHz		34.0	
	f = 1000MHz	30.0	33.0	
	f = 1500MHz		32.0	
Gain Flatness	dB		± 1.0	± 1.5
Output Power P <sub>3dB</sub>	f = 1000MHz	+33	+34	
Output IP3	f = 1000MHz	+45	+48	
Reverse Isolation S <sub>12</sub>	f = 1000MHz	-40	-48	
Noise Figure	f = 1000MHz		4.5	6.0
VSWR	Input VSWR S <sub>11</sub> f = 1000MHz		1.6:1	2.0:1
	Output VSWR S <sub>22</sub> f = 1000MHz		2.0:1	2.5:1
DC Power Supply Voltage	V	14	15	16
DC Power Supply Current	mA		950	1200

**Gain S21, Isolation S12, Return Loss S11, S22 vs Frequency**



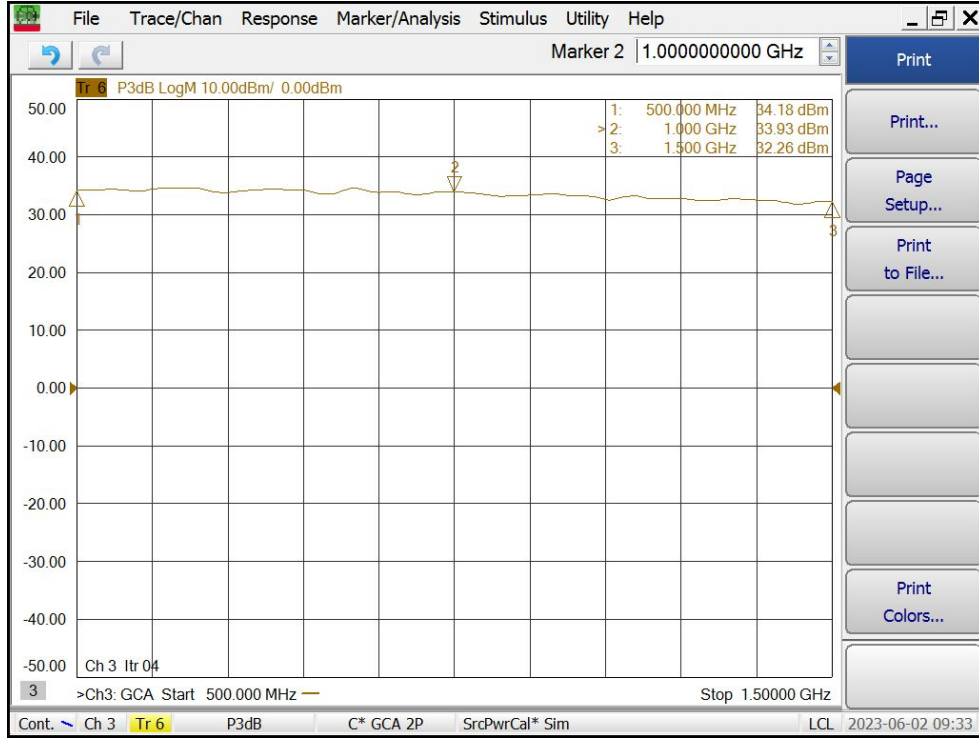
**Noise Figure vs Frequency**



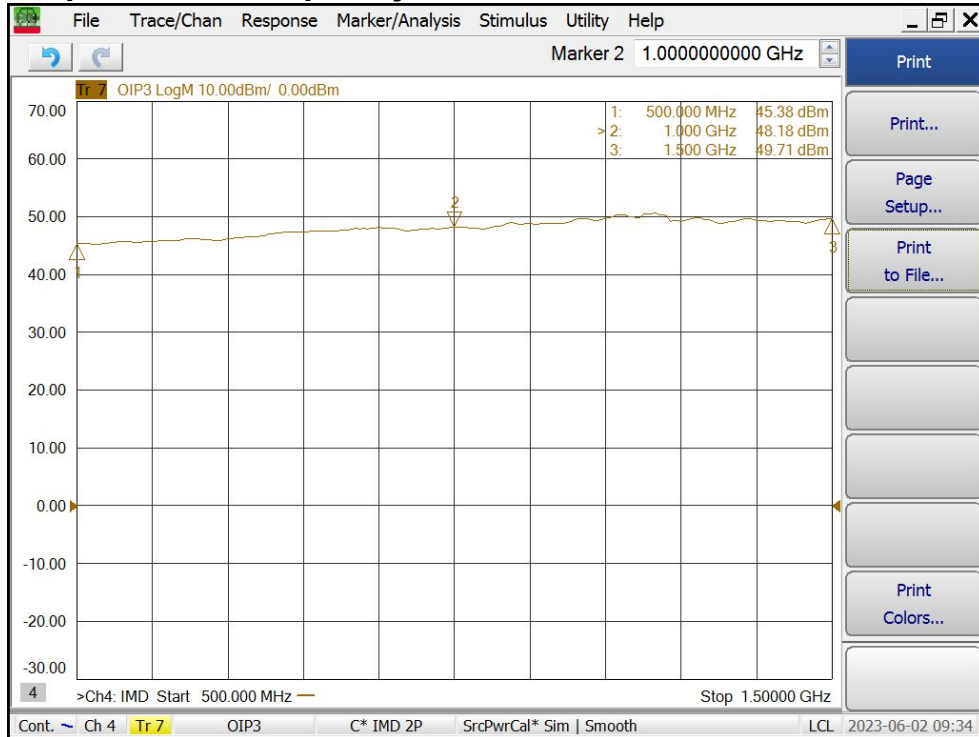
**MPA Series**

**500-1500MHz 2W RF Power Amplifier**

**Output P3dB vs Frequency**



**Output IP3 vs Frequency**



## MPA Series

## 500-1500MHz 2W RF Power Amplifier

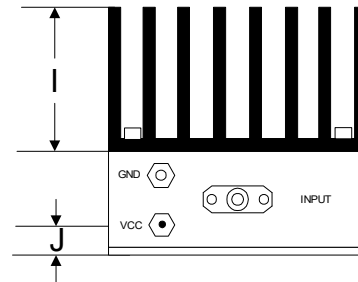
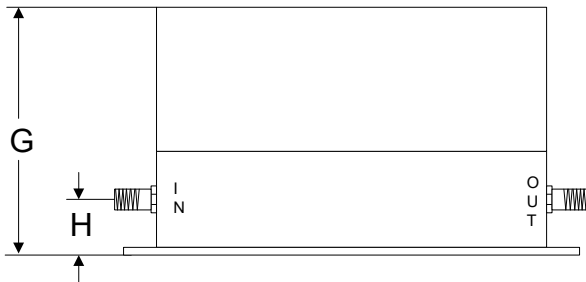
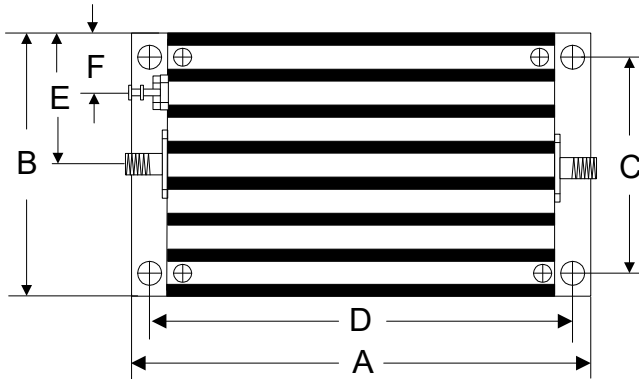
### Absolute Maximum Ratings

Parameter	Absolute Maximum
RF Input Power	+12dBm
DC Supply Voltage	+16V
Operating Temperature	-40 °C to +85 °C
Storage Temperature	-55 °C to +125 °C

### ESD Sensitive Material



### Outline



	A	B	C	D	E	F	G	H	I	J
Inch	3.750	2.000	1.750	3.400	1.000	0.400	1.913	0.375	1.000	0.238
mm	92.25	50.80	44.45	86.36	25.40	10.16	48.59	9.53	25.40	6.03