

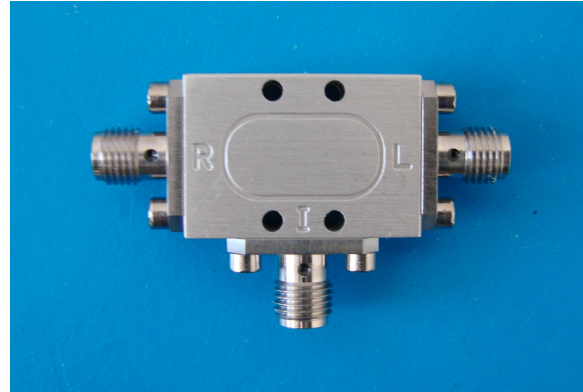
## Level 13

## 20-32GHz Frequency Mixer

### Features

- LO/RF: 20–32GHz
- IF: DC–10GHz
- LO Level: +13dBm
- Conversion Loss: 7dB typ.
- RF Input: Up to +19dBm
- Input IP3: +18dBm
- K-2.92mm Female RF/LO Ports
- SMA Female IF Port

### Picture



### Description

GXR-20 is a passive double balanced mixer with 20 to 32GHz at RF/LO port and DC to 10GHz at IF port.

### Electrical Specifications @ +25 °C, IF=100MHz, LO=+13dBm, 50 Ω

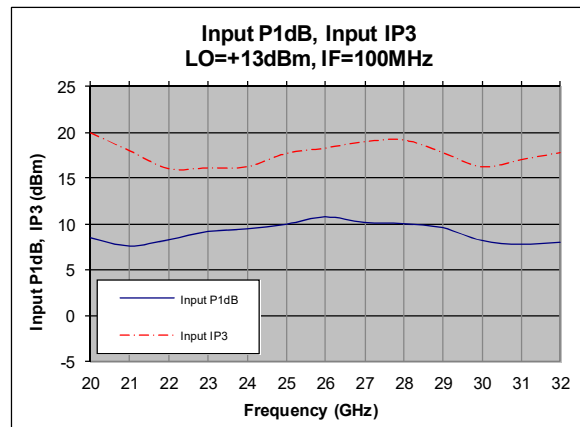
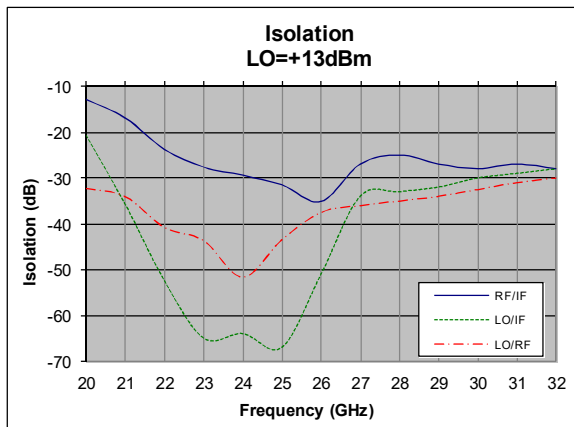
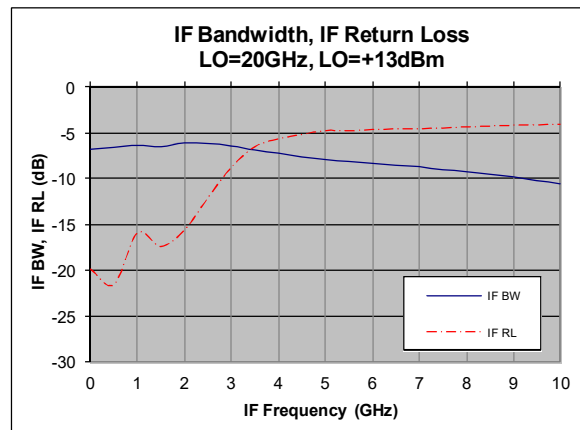
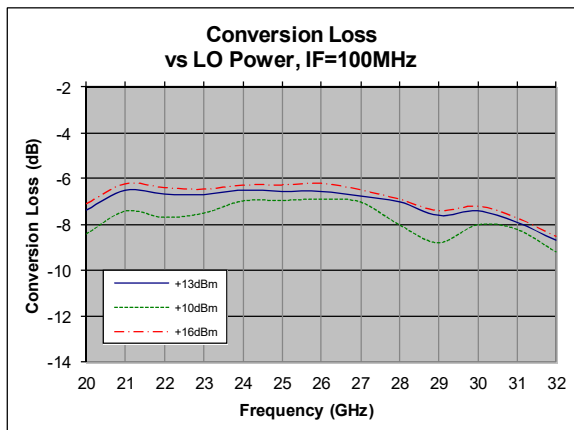
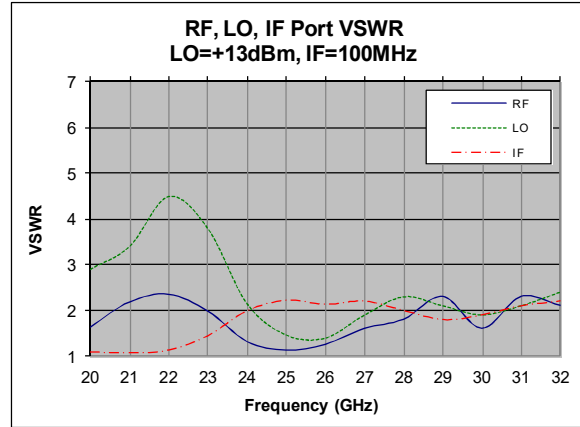
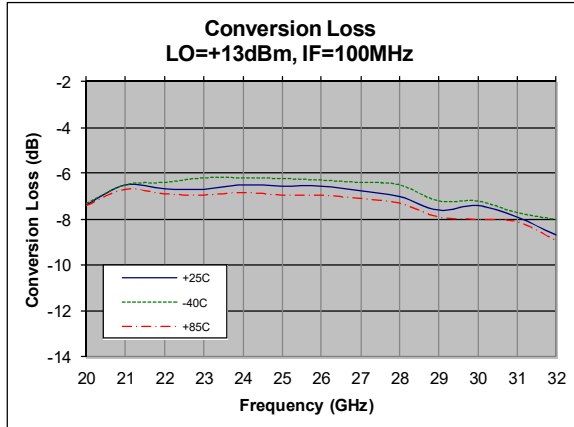
Parameter	Unit	Minimum	Typical	Maximum
Frequency Range	LO/RF	20		32
	IF	DC		10
LO Power Level	dBm	+10	+13	+16
Conversion Loss	dB		7	9
LO-RF Isolation	dB		36	
LO-IF Isolation	dB		36	
RF-IF Isolation	dB		26	
RF Input P <sub>1dB</sub>	dBm		+9	
Input IP3	dBm		+18	

Unless otherwise noted, all measurements performed as a down-converter.

## Level 13

## 20-32GHz Frequency Mixer

### Typical Performance



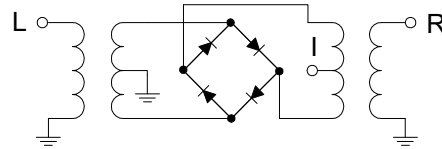
## Level 13

## 20-32GHz Frequency Mixer

### Absolute Maximum Ratings

Parameter	Absolute Maximum
RF Power	+25dBm
LO Driver	+25dBm
Operating Temperature	-40 °C to +85 °C
Storage Temperature	-65 °C to +150 °C

### Schematic



### Outline

