

MPA Series

700-900MHz 5W RF Power Amplifier

Features

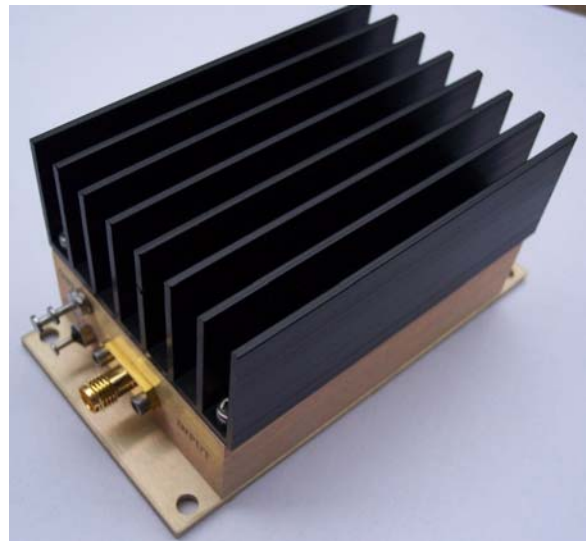
- Frequency Range: 700-900MHz
- Gain: 42dB
- P_{out}: +37dBm
- IP3: +47dBm
- Noise Figure: 6dB
- DC Power: 9V
- SMA Connector

Performance measured @ 800MHz

Description

MPA-0709 is a 5Watt (+37dBm) output RF Power Amplifier operating from single 9V DC power supply with frequency from 700MHz to 900MHz.

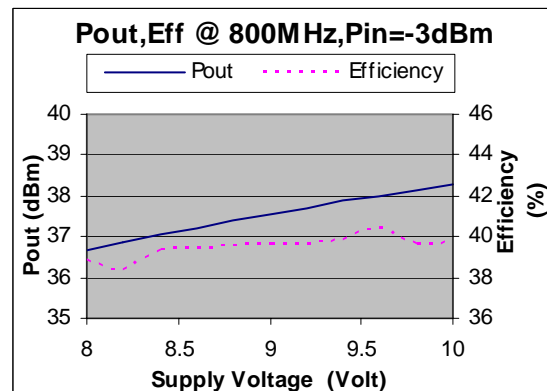
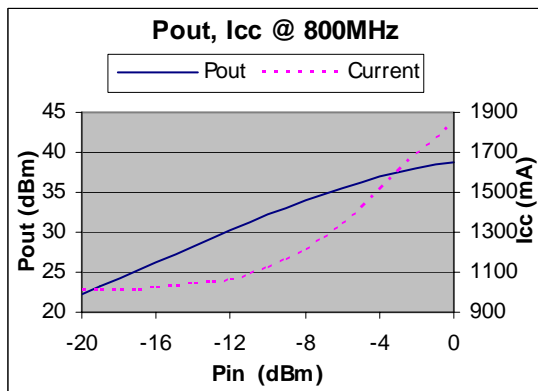
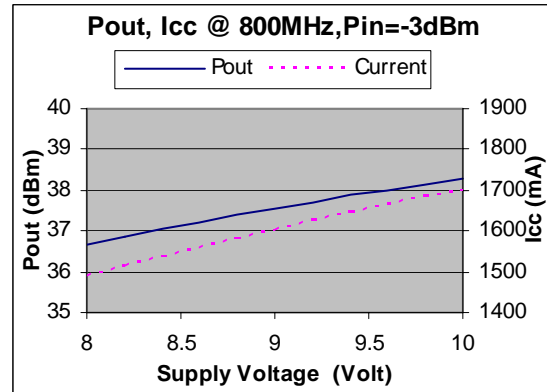
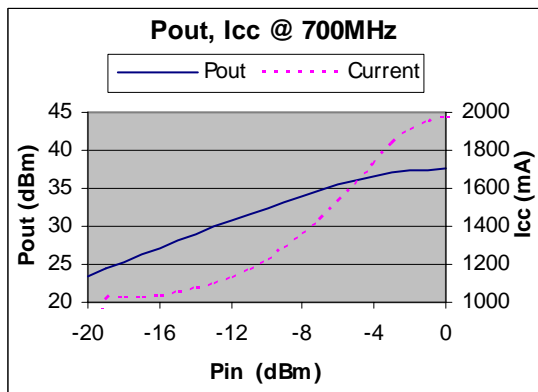
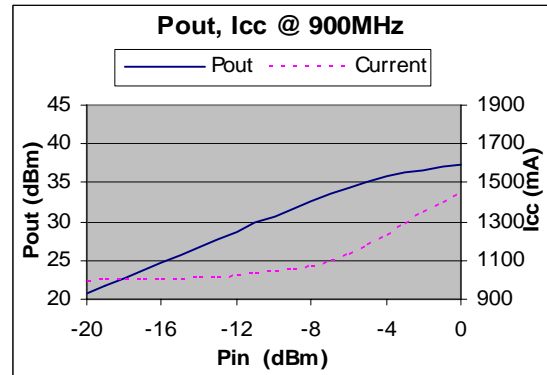
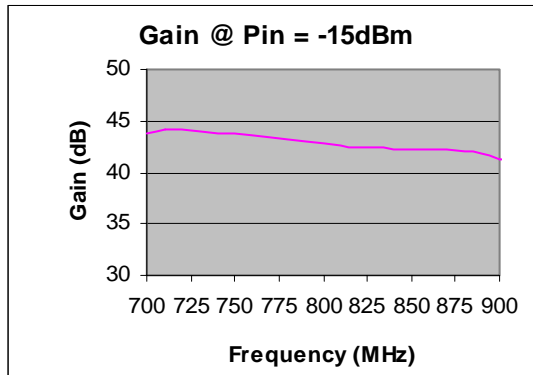
Picture



Electrical Specifications @ +25 °C, Z_s = Z_L = 50 Ω, V_{cc} = 9V

Parameter	Unit	Minimum	Typical	Maximum
Frequency Range	MHz	700		900
Small Signal Gain	dB	40	42	
Output Power P _{out} @ P _{in} = -3dBm	dBm		+37	
IP3	dBm		+47	
Reverse Isolation	dB		-65	
Noise Figure	dB		6.0	
Efficiency at Pout = +37dBm	%		38	
VSWR	Input Output		1.2:1 2.0:1	
DC Power Supply	V		9	
Supply Current	mA		1600	
Size (Excluding SMA Connector)	inch	3.750" x 2.000" x 1.813"		
Weight	Oz.	8		

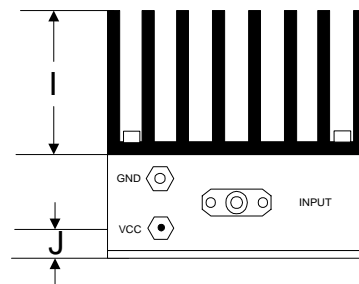
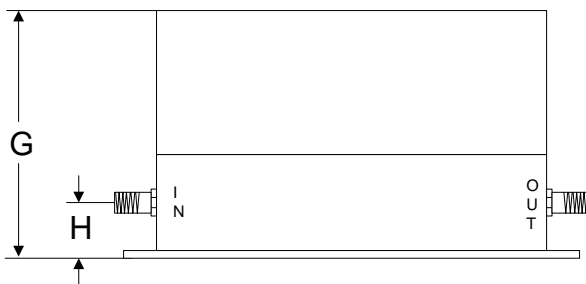
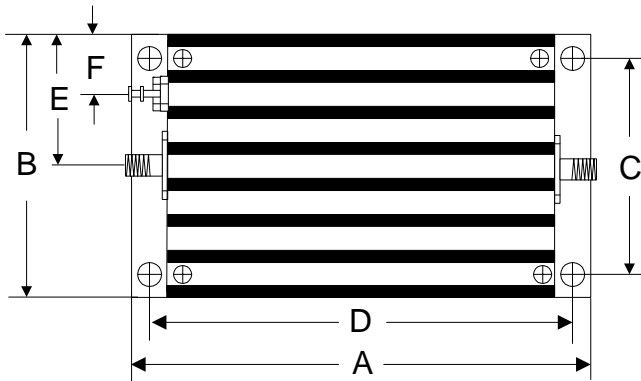
Typical Performance @ +25 °C



Absolute Maximum Ratings

Parameter	Absolute Maximum
RF Input Power	+10dBm
Supply Voltage	+12V
Operating Temperature	-30 °C to +65 °C
Storage Temperature	-55 °C to +100 °C

Outline



	A	B	C	D	E	F	G	H	I	J
Inch	3.750	2.000	1.750	3.400	1.000	0.400	1.813	0.375	1.000	0.238
mm	92.25	50.80	44.45	86.36	25.40	10.16	46.05	9.53	25.40	6.03